



## **37 Clarendon Road, Watford, WD17 1DJ**

**£330 Per Week**

THE CLARENDON, CLARENDON ROAD, WATFORD WD17

ONE OF THE TALLEST & MOST LUXURIOUS RESIDENTIAL TOWERS IN THE AREA OFFERING RESIDENTS AMENITIES SUCH AS GYM, CINEMA, CONCIERGE, CLUB LOUNGE AND CAFE

A MANHATTAN STYLE SUITE WITH SEPARATE LIVING AND SLEEPING AREAS SET OVER 481 SQUARE FEET

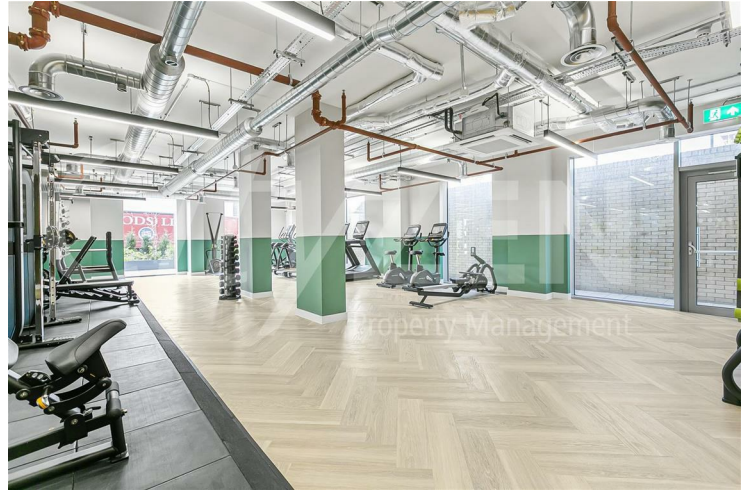
FURNISHED AND AVAILABLE FROM 31.03.2026

- STUDIO SUITE WITH SEPARATED LIVING ROOM & BEDROOM
- HOTEL STYLE FACILITIES
- AVAILABLE FROM 31.03.2026
- LUXURY KITCHEN
- LOCATED IN THE CENTER OF WATFORD WD17
- CONCIERGE, RES GYM, CINEMA, CLUB LOUNGE & CAFE
- LUXURY BATHROOM SUITE
- MINS FROM STATION (FAST TRAIN TO LONDON 15 MINS)
- 25 STOREY RESIDENTIAL TOWER WITH LUXURY FINISHES
- WEST FACING

# 37 Clarendon Road, Watford, WD17 1DJ



ENTRANCE



GYM



ENTRANCE



GYM



CINEMA



THE CLARENDON

# 37 Clarendon Road, Watford, WD17 1DJ



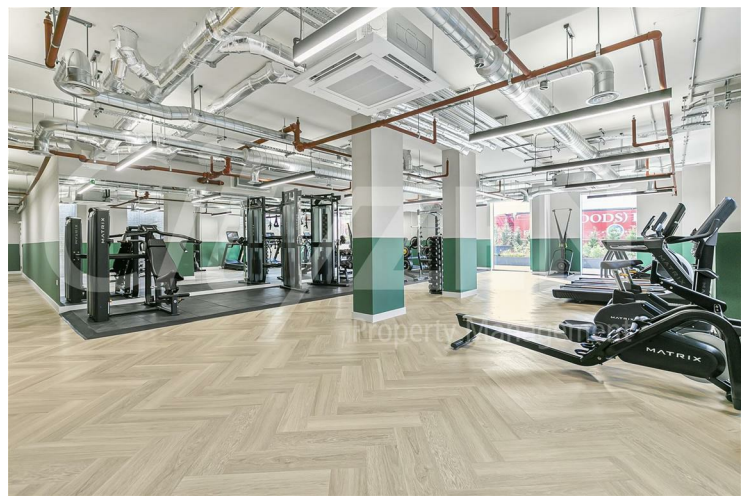
THE CLARENDON



CINEMA



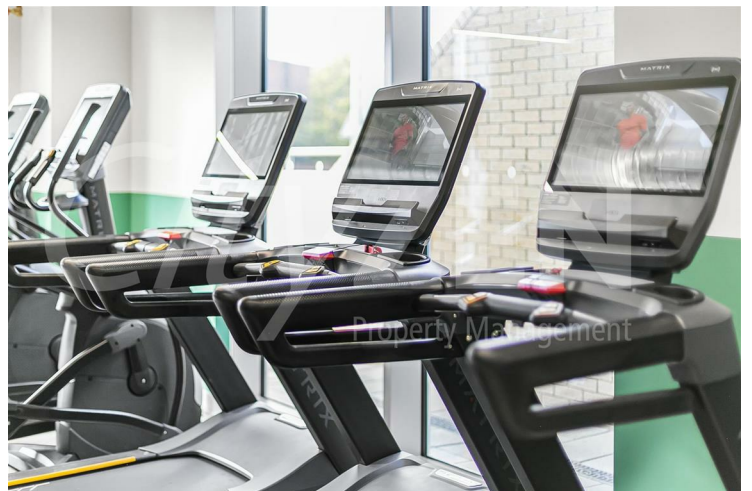
CINEMA



GYM



CINEMA

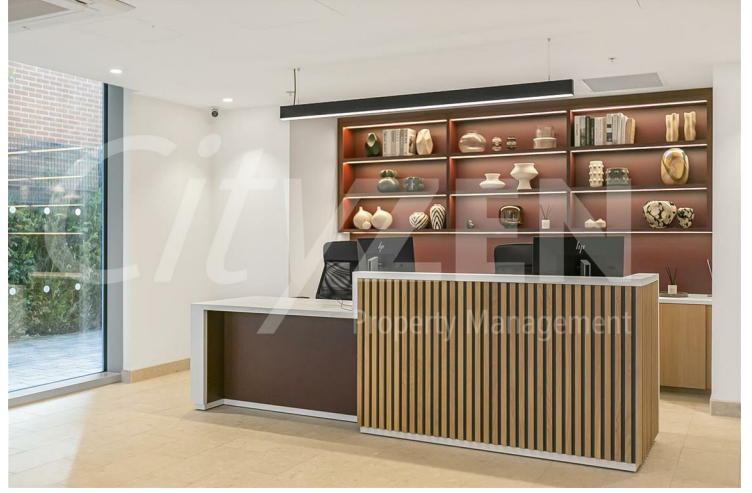


GYM

**37 Clarendon Road, Watford, WD17 1DJ**



**GYM**



**CONCIERGE**



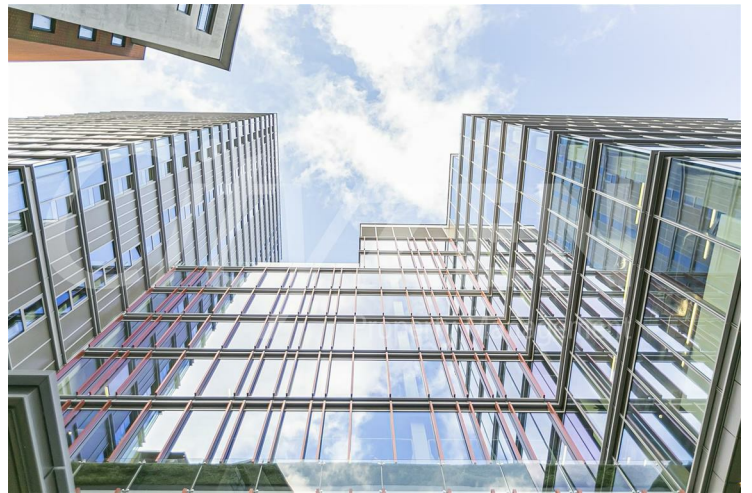
**LOBBY**



**LOBBY**



**LOBBY**



**THE CLARENDON**

**37 Clarendon Road, Watford, WD17 1DJ**



**ROOF GARDEN**



**ROOF GARDEN**



**ROOF GARDEN**



**THE CLARENDON**



**ROOF GARDEN**



**ROOF GARDEN**

**37 Clarendon Road, Watford, WD17 1DJ**



**THE CLARENDON**



**SLEEPING AREA**



**ROOF GARDEN**



**SLEEPING AREA**



**KITCHEN**

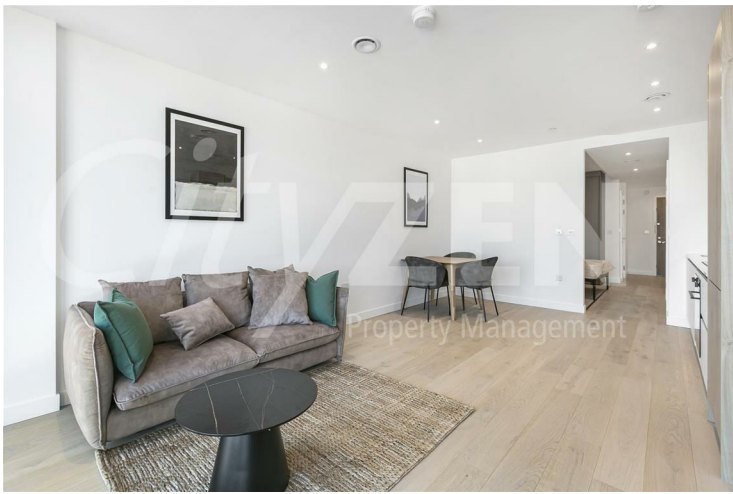


**BATHROOM**

**37 Clarendon Road, Watford, WD17 1DJ**



**LIVING AREA**

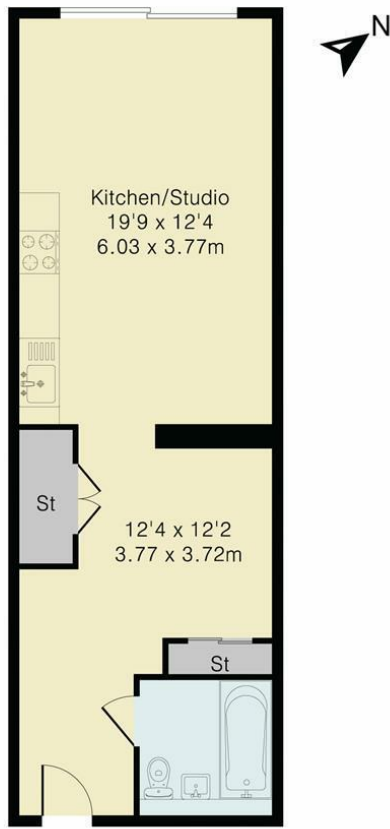


**LIVING AREA**



**LIVING AREA**

Approximate Gross Internal Area 481 sq ft - 44 sq m



Although Pink Plan Ltd ensures the highest level of accuracy, measurements of doors, windows and rooms are approximate and no responsibility is taken for error, omission or misstatement. These plans are for representation purposes only as defined by RICS code of measuring practise. No guarantee is given on total square footage of the property within this plan. The figure icon is for initial guidance only and should not be relied on as a basis of valuation.



**Energy Efficiency Rating**

	Current	Potential
Very energy efficient - lower running costs		
(92 plus) <b>A</b>		
(81-91) <b>B</b>	<b>86</b>	<b>86</b>
(69-80) <b>C</b>		
(55-68) <b>D</b>		
(39-54) <b>E</b>		
(21-38) <b>F</b>		
(1-20) <b>G</b>		
Not energy efficient - higher running costs		

**England & Wales** EU Directive 2002/91/EC

**Environmental Impact (CO<sub>2</sub>) Rating**

	Current	Potential
Very environmentally friendly - lower CO <sub>2</sub> emissions		
(92 plus) <b>A</b>		
(81-91) <b>B</b>		
(69-80) <b>C</b>		
(55-68) <b>D</b>		
(39-54) <b>E</b>		
(21-38) <b>F</b>		
(1-20) <b>G</b>		
Not environmentally friendly - higher CO <sub>2</sub> emissions		

**England & Wales** EU Directive 2002/91/EC



We have prepared these property particulars as a general guide to a broad description of the property. They are not intended to constitute part of an offer or contract. We have not carried out a structural survey and the services, appliances and specific fittings have not been tested. All photographs, measurements, floorplans and distances referred to are given as a guide only and should not be relied upon for the purchase of carpets or any other fixtures or fittings. Lease details, service charges and ground rent (where applicable) and council tax are given as a guide only and should be checked and confirmed by your Solicitor prior to exchange of contracts.