



## Lumiere Building, 38 City Road East, Manchester, M15 4QN

**£323 Per Week**

A well-proportioned two-bedroom, two-bathroom apartment located in the Lumiere building in Manchester.

The property features an open-plan living and kitchen area with access to a private balcony. Both bedrooms are doubles, with the main bedroom including an en-suite. The apartment benefits from good natural light, a modern fitted kitchen with integrated appliances, and a practical layout suited to a range of occupants. Positioned in a well-maintained development close to local amenities and transport links, it offers convenient city-centre living.

The development also has a resident gym, sauna, rooftop terrace, 24 hour concierge and zen gardens.

ALLOCATED PARKING SPACE

COMES FURNISHED

AVAILABLE FROM NOW

- Two double bedrooms
- Two bathrooms, including an en-suite to the main bedroom
- Open-plan living/kitchen space
- Allocated parking space
- Modern fitted kitchen with integrated appliances
- Resident gym and sauna
- Rooftop terrace
- 24 hour concierge
- AVAILABLE NOW
- FURNISHED

# Lumiere Building, 38 City Road East, Manchester, M15 4QN



BEDROOM



SHOWER ROOM



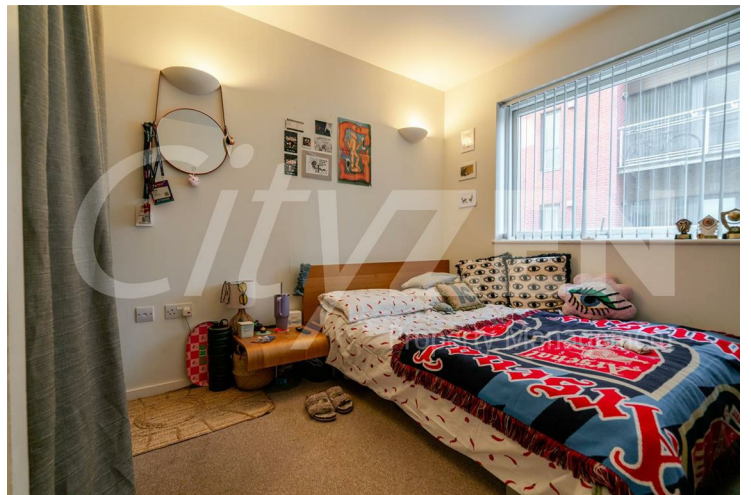
BEDROOM



BEDROOM



BEDROOM



BEDROOM

**Lumiere Building, 38 City Road East, Manchester, M15 4QN**



**BATHROOM**



**RECEPTION**



**RECEPTION**



**KITCHEN**



**RECEPTION**



**KITCHEN**

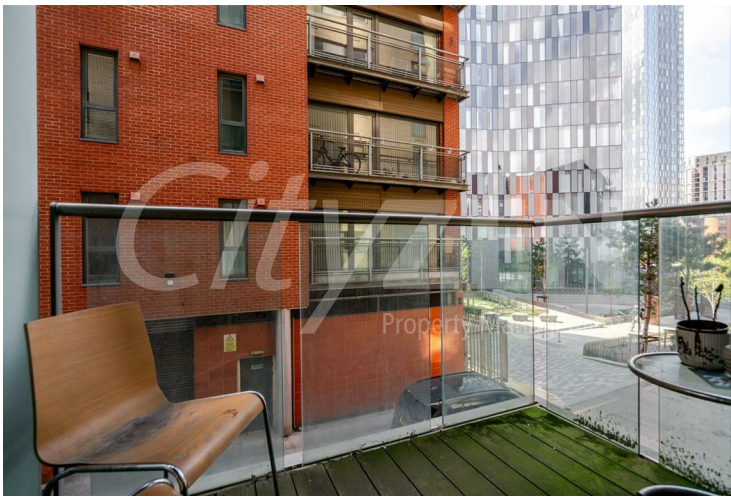
# Lumiere Building, 38 City Road East, Manchester, M15 4QN



KITCHEN



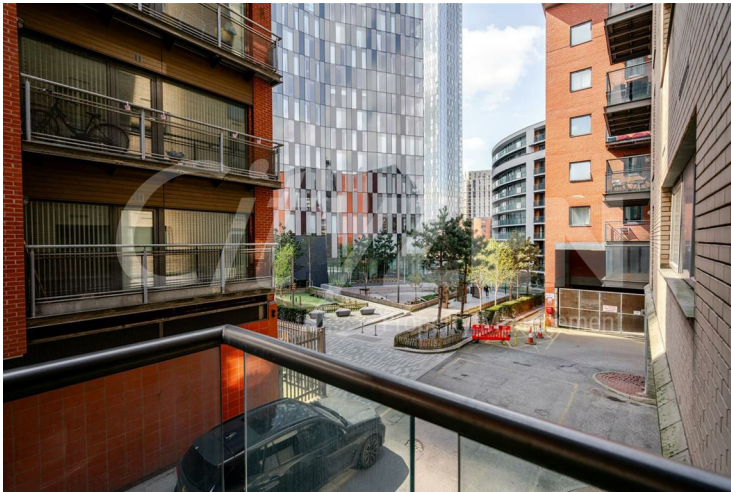
GARDENS



BALCONY



LUMIERE BUILDING



BALCONY

# Lumiere Building, 38 City Road East, Manchester, M15 4QN



LUMIERE BUILDING

