



## **Silkbank Wharf, 21 Derwent Street, Manchester, M5 4JR**

**£253 Per Week**

SILKBANK WHARF (PAVILION WHARF) MANCHESTER M5

10TH FLOOR ONE BED APARTMENT WITHIN NEWLY BUILT WATERSIDE DEVELOPMENT

LOCATED ON THE BANKS OF THE RIVER IRWELL OPPOSITE THE HISTORIC CASTLEFIELD AREA AND CLOSE TO THE CITY CENTER

FURNISHED

AVAILABLE FROM 22.07.2026

Marketing of On-Site Amenities and Agent Indemnity.

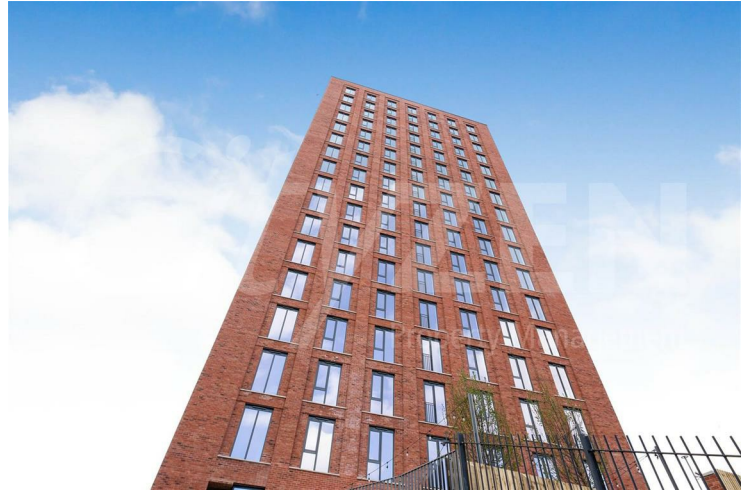
The Agent is authorised to market the building's on-site amenities by their client (the landlord), including but not limited to the concierge services and gym facilities (collectively, the "Amenities"), based strictly on descriptions and specifications provided by the Client & or the developer. The Agent acts solely as a marketing representative and exercises no operational control, management, or oversight over the Amenities and as such the amenities are subject to change or withdrawal by the freeholder/developer or their representatives.

- AVAILABLE FROM 22.07.2026
- WATERFRONT LIVING
- GYM, RESIDENTS LOUNGE, CO-WORKING SPACE, CONCIERGE
- JULIETTE BALCONY
- 1 BEDROOM APARTMENT
- LOCATED ON THE BANKS OF THE RIVER IRWELL
- RESIDENTS WATERSIDE TERRACE
- 10TH FLOOR
- CLOSE TO CITY CENTER
- ROOFTOP VIEWS

# Silkbank Wharf, 21 Derwent Street, Manchester, M5 4JR



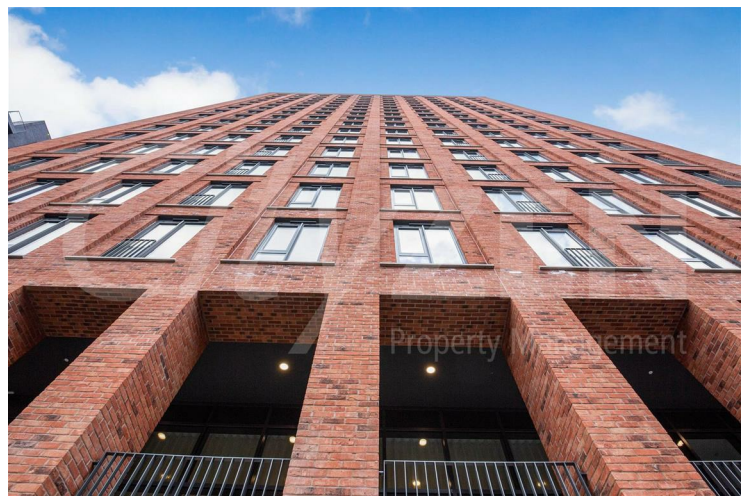
RECEPTION



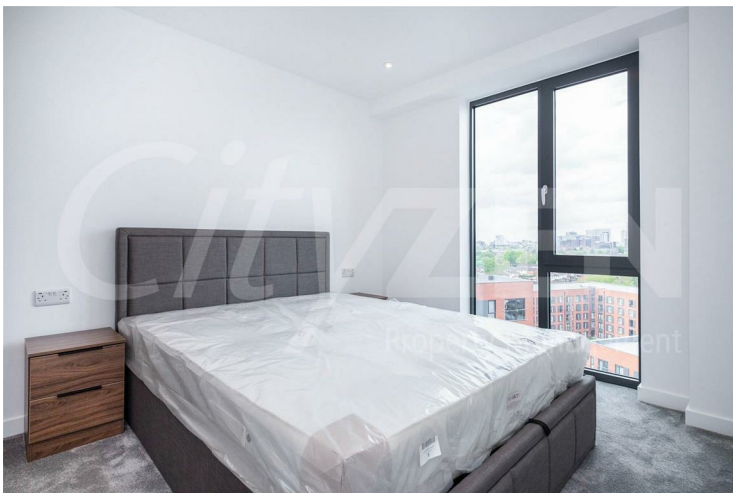
SILKBANK WHARF



KITCHEN



SILKBANK WHARF



BEDROOM



SILKBANK WHARF

# Silkbank Wharf, 21 Derwent Street, Manchester, M5 4JR



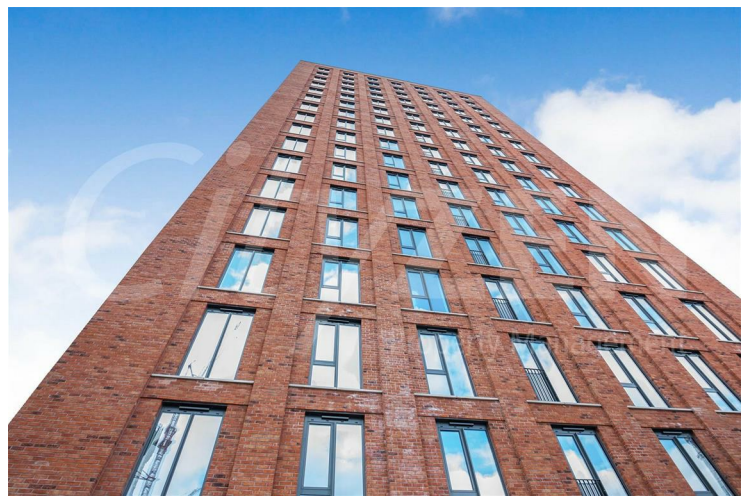
SILKBANK WHARF



SILKBANK WHARF



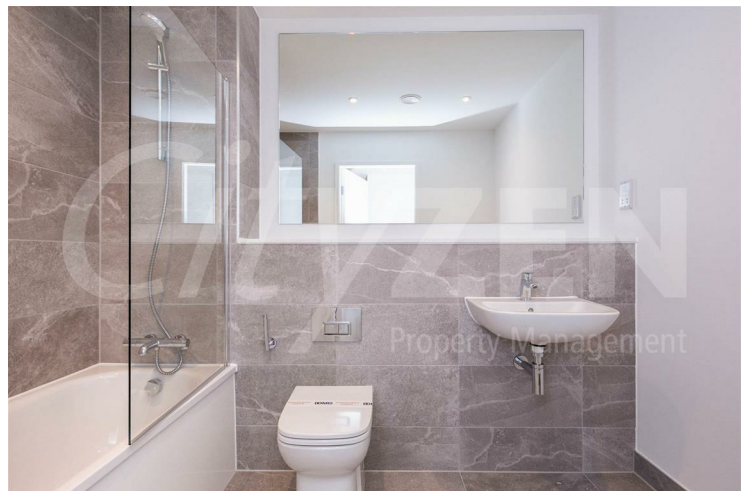
LOBBY/LOUNGE



SILKBANK WHARF



GYM



BATHROOM

**Silkbank Wharf, 21 Derwent Street, Manchester, M5 4JR**



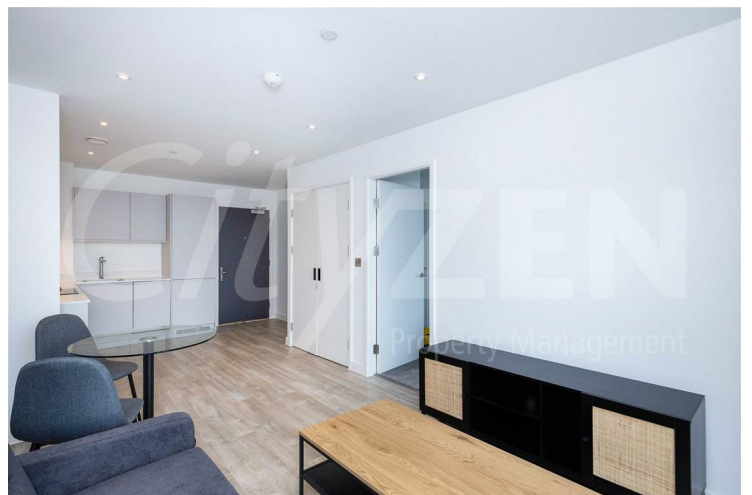
**KITCHEN**



**RECEPTION**



**RECEPTION**



**RECEPTION**



**RECEPTION**



**BEDROOM**

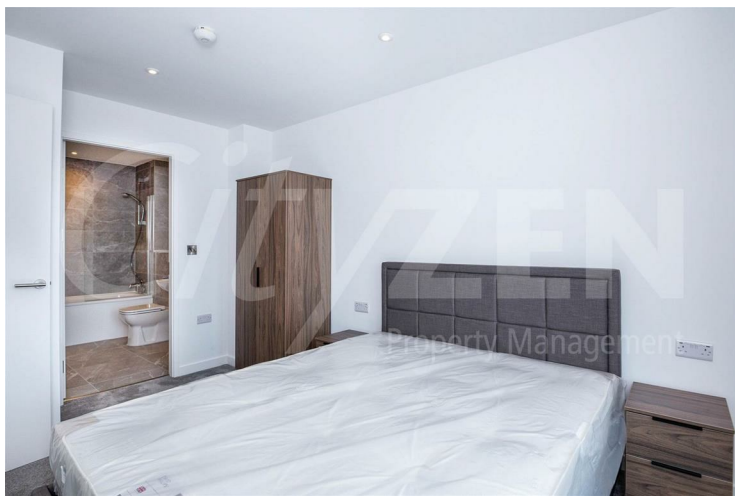
# Silkbank Wharf, 21 Derwent Street, Manchester, M5 4JR



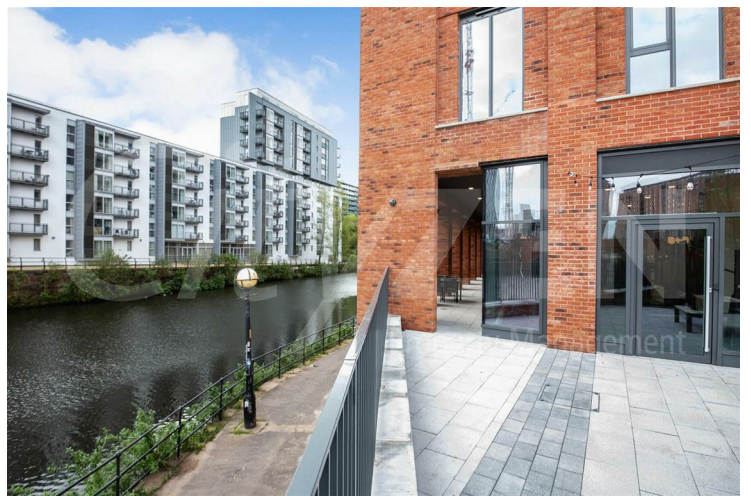
**BEDROOM**



**RIVERSIDE TERRACE**



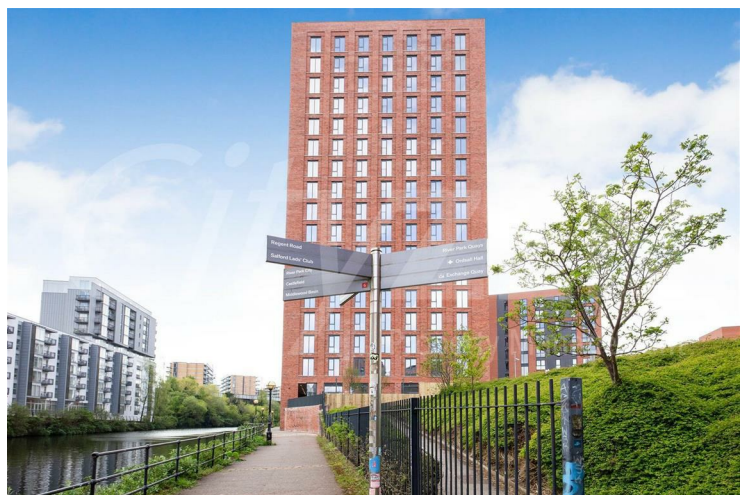
**BEDROOM**



**SILKBANK WHARF**



**BUILDING ENTRANCE**



**SILKBANK WHARF**

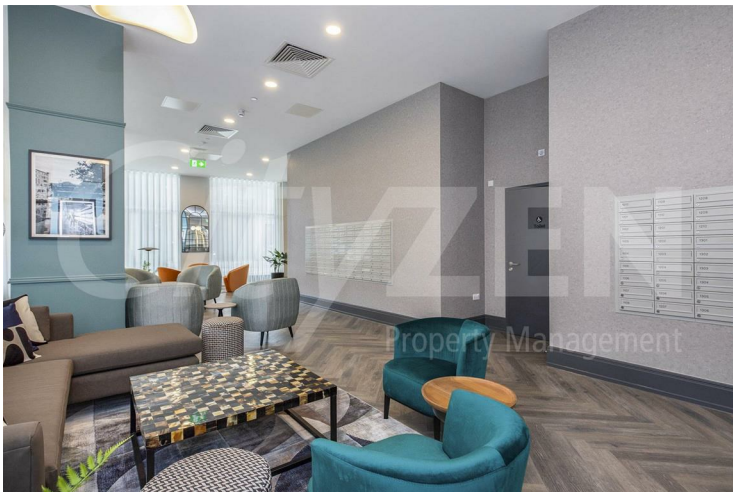
# Silkbank Wharf, 21 Derwent Street, Manchester, M5 4JR



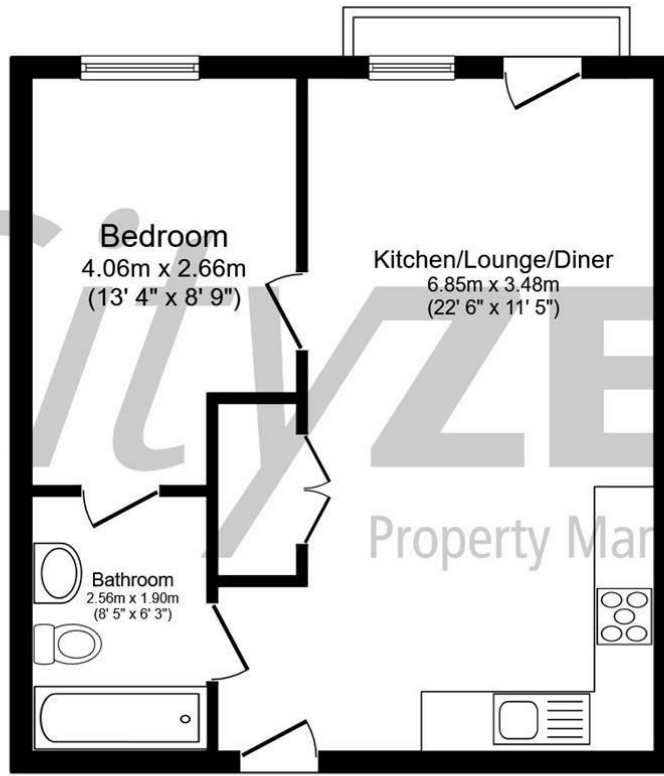
LOBBY/LOUNGE



LOBBY/LOUNGE



LOBBY/LOUNGE



Total floor area 43.4 m<sup>2</sup> (468 sq.ft.) approx

This floor plan is for illustrative purposes only. It is not drawn to scale. Any measurements, floor areas (including any total floor area), openings and orientation are approximate. No details are guaranteed, they cannot be relied upon for any purpose and they do not form part of any agreement. No liability is taken for any error, omission or misstatement. A party must rely upon its own inspection(s). Powered by [www.focalagent.com](http://www.focalagent.com)



Energy Efficiency Rating		
	Current	Potential
Very energy efficient - lower running costs		
(92 plus) <b>A</b>		
(81-91) <b>B</b>	<b>85</b>	<b>85</b>
(69-80) <b>C</b>		
(55-68) <b>D</b>		
(39-54) <b>E</b>		
(21-38) <b>F</b>		
(1-20) <b>G</b>		
Not energy efficient - higher running costs		
England & Wales		EU Directive 2002/91/EC
Environmental Impact (CO <sub>2</sub> ) Rating		
	Current	Potential
Very environmentally friendly - lower CO <sub>2</sub> emissions		
(92 plus) <b>A</b>		
(81-91) <b>B</b>		
(69-80) <b>C</b>		
(55-68) <b>D</b>		
(39-54) <b>E</b>		
(21-38) <b>F</b>		
(1-20) <b>G</b>		
Not environmentally friendly - higher CO <sub>2</sub> emissions		
England & Wales		EU Directive 2002/91/EC

We have prepared these property particulars as a general guide to a broad description of the property. They are not intended to constitute part of an offer or contract. We have not carried out a structural survey and the services, appliances and specific fittings have not been tested. All photographs, measurements, floorplans and distances referred to are given as a guide only and should not be relied upon for the purchase of carpets or any other fixtures or fittings. Lease details, service charges and ground rent (where applicable) and council tax are given as a guide only and should be checked and confirmed by your Solicitor prior to exchange of contracts.