



Silkbank Wharf, 21 Derwent Street, Manchester, M5 4EP

£259 Per Week

SILKBANK WHARF (PAVILION WHARF) MANCHESTER M5

6TH FLOOR ONE BED APARTMENT WITHIN NEWLY BUILT WATERSIDE DEVELOPMENT

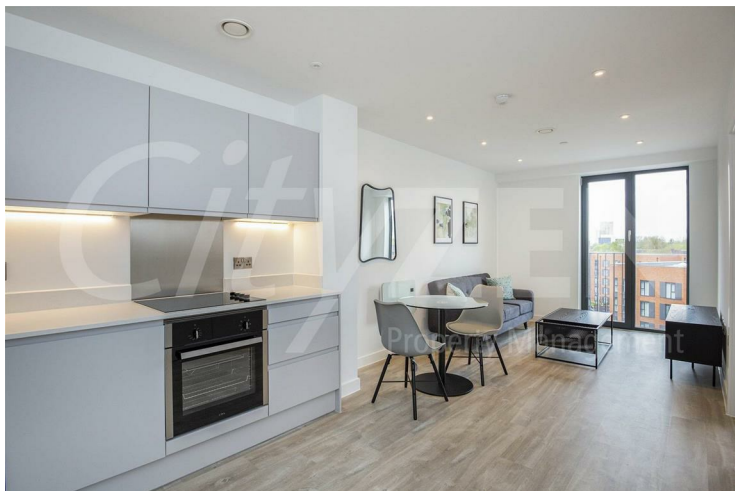
LOCATED ON THE BANKS OF THE RIVER IRWELL OPPOSITE THE HISTORIC CASTLEFIELD AREA AND CLOSE TO THE CITY CENTER

FURNISHED

AVAILABLE FROM 01.09.2025

- SILKBANK WHARF (PAVILION WHARF)
- WATERFRONT LIVING
- GYM, RESIDENTS LOUNGE, CO-WORKING SPACE, CONCIERGE
- AVAILABLE FROM 01.09.2025
- 1 BEDROOM APARTMENT
- LOCATED ON THE BANKS OF THE RIVER IRWELL
- RESIDENTS WATERSIDE TERRACE
- 6TH FLOOR
- CLOSE TO CITY CENTER
- JULIETTE BALCONY

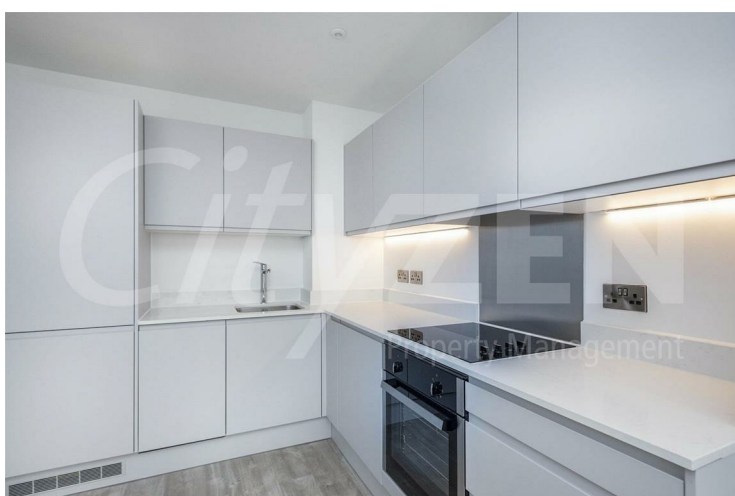
Silkbank Wharf, 21 Derwent Street, Manchester, M5 4EP



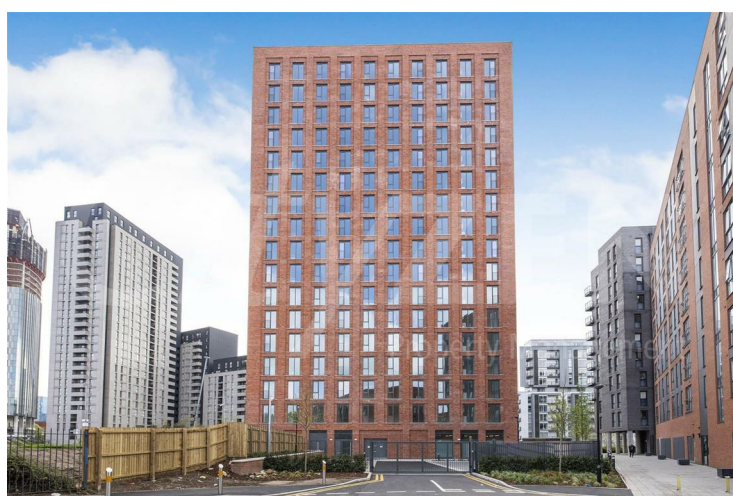
RECEPTION



SILKBANK WHARF



KITCHEN



SILKBANK WHARF



BEDROOM



SILKBANK WHARF

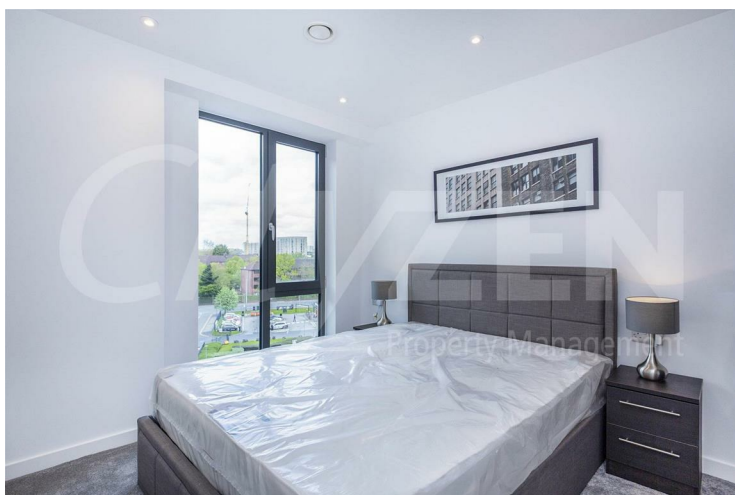
Silkbank Wharf, 21 Derwent Street, Manchester, M5 4EP



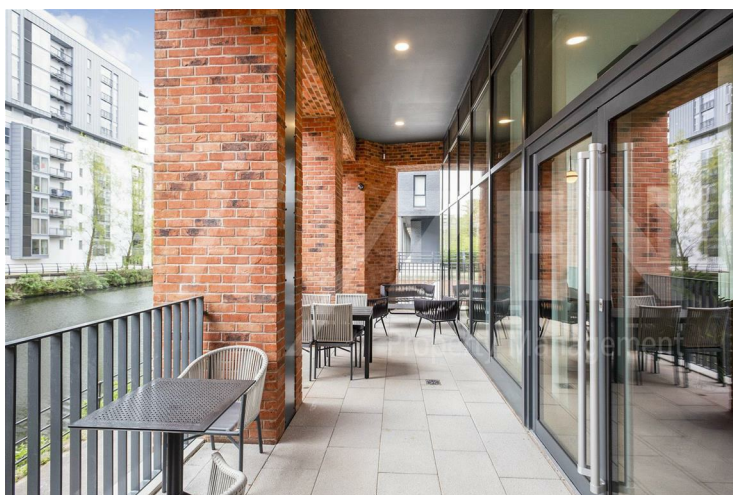
LOBBY/LOUNGE



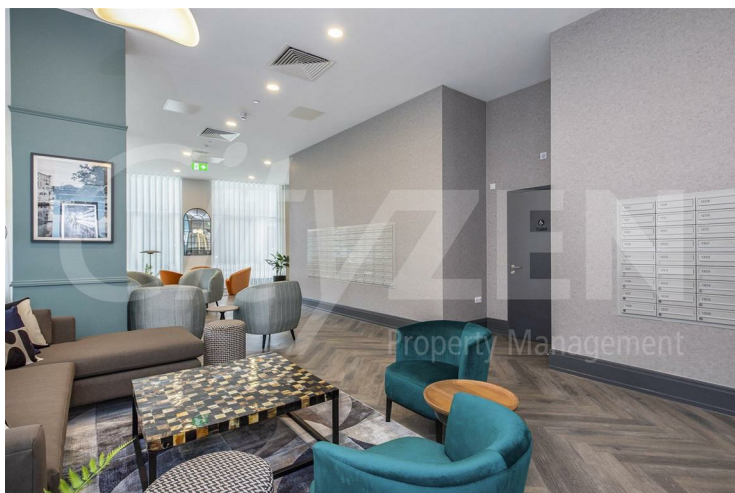
GYM



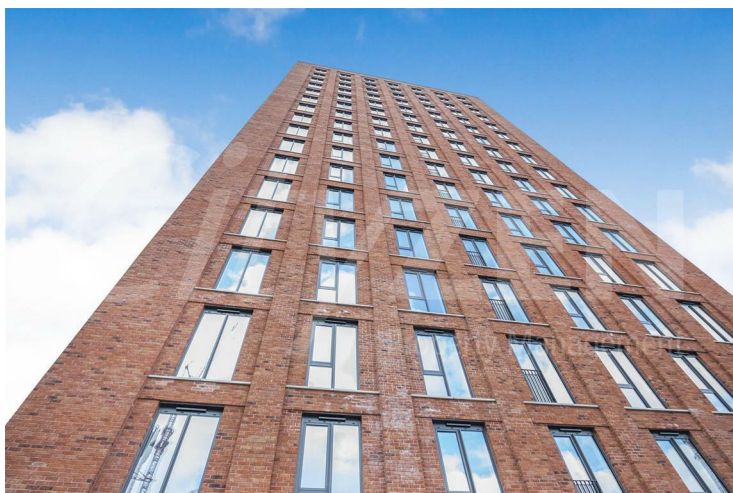
BEDROOM



RIVERSIDE TERRACE



LOBBY/LOUNGE

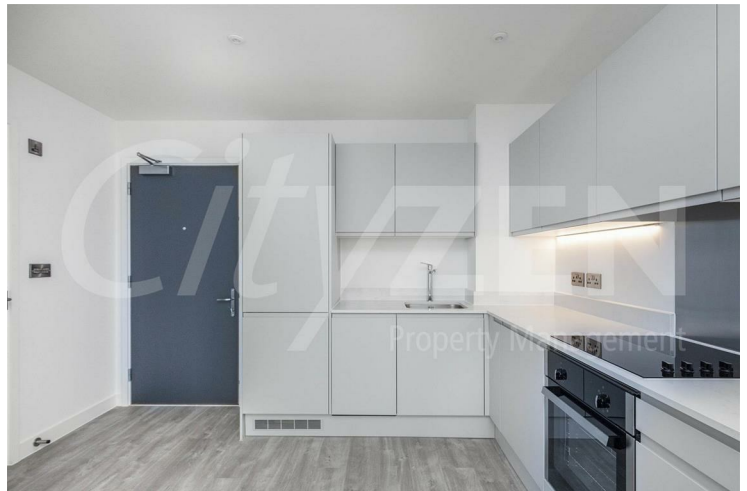


SILKBANK WHARF

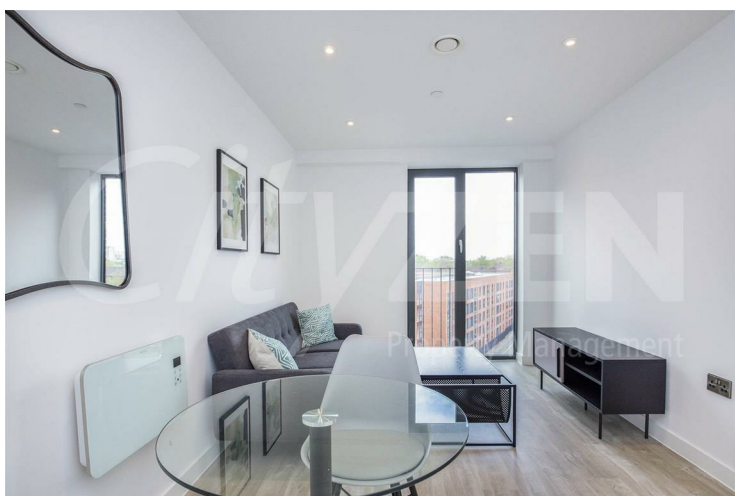
Silkbank Wharf, 21 Derwent Street, Manchester, M5 4EP



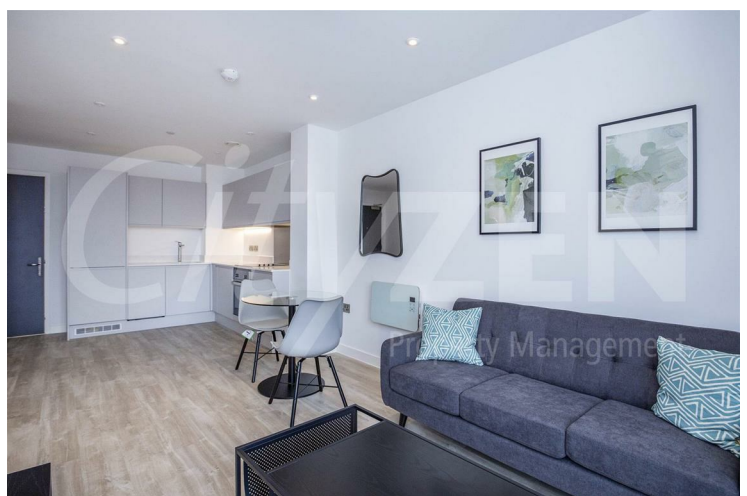
RECEPTION



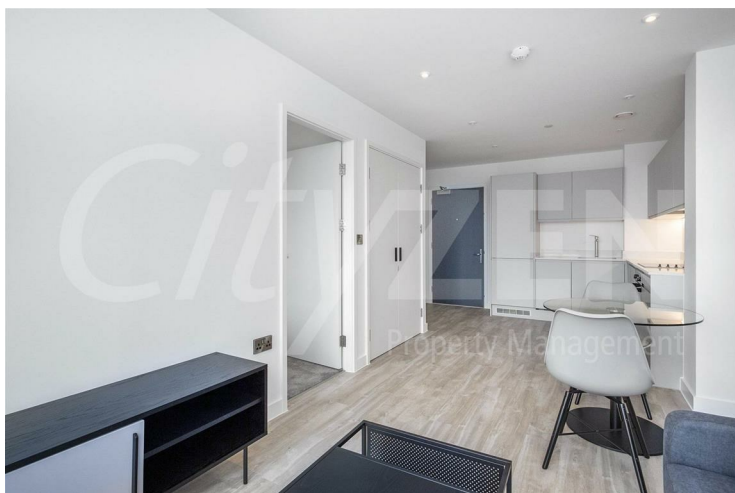
KITCHEN



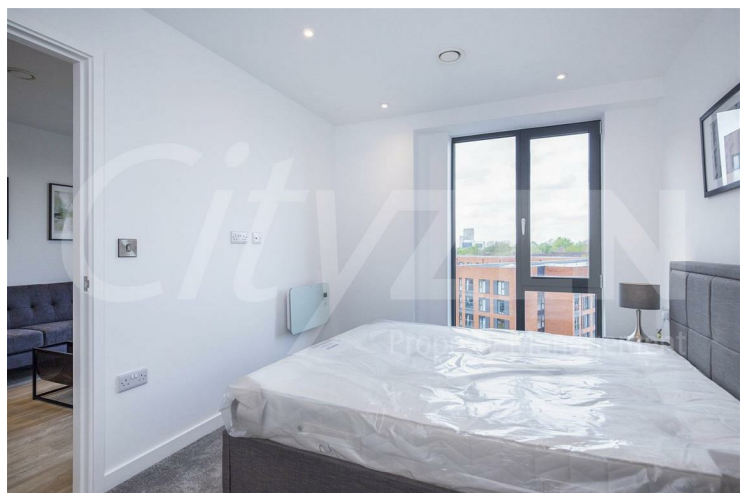
RECEPTION



RECEPTION



RECEPTION

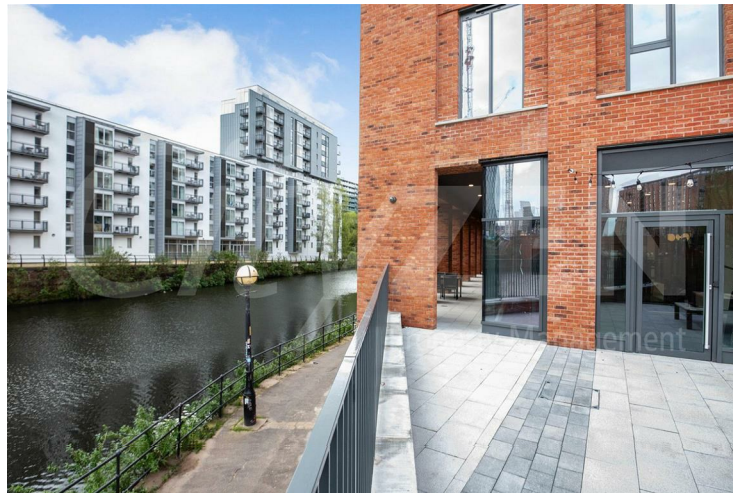


BEDROOM

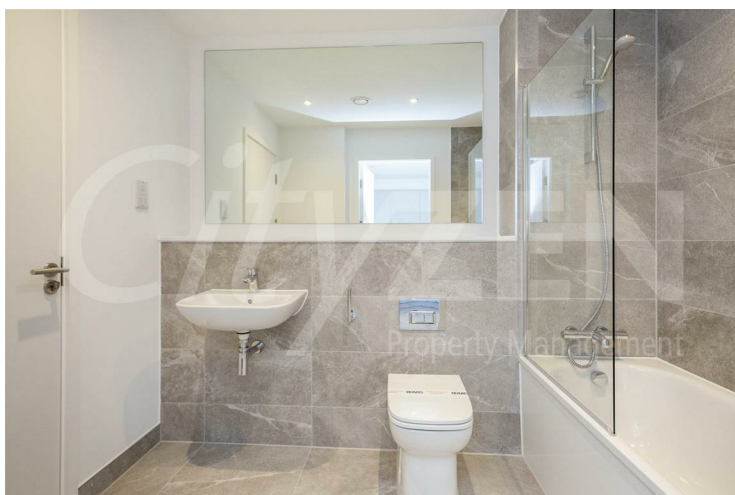
Silkbank Wharf, 21 Derwent Street, Manchester, M5 4EP



BEDROOM



SILKBANK WHARF



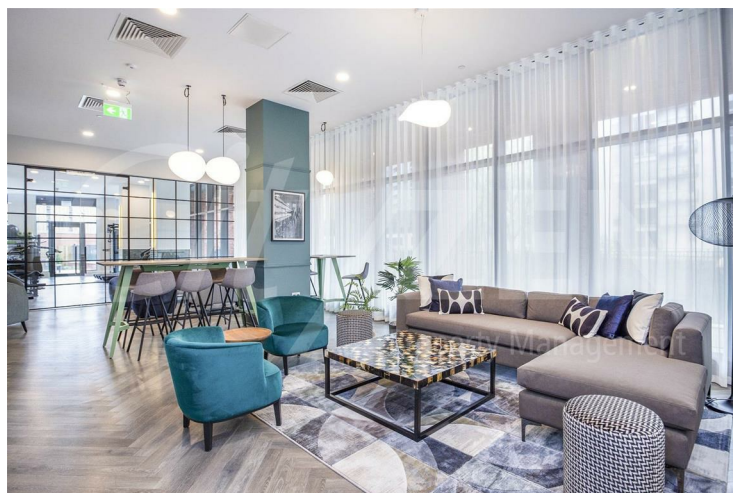
BATHROOM



LOBBY/LOUNGE

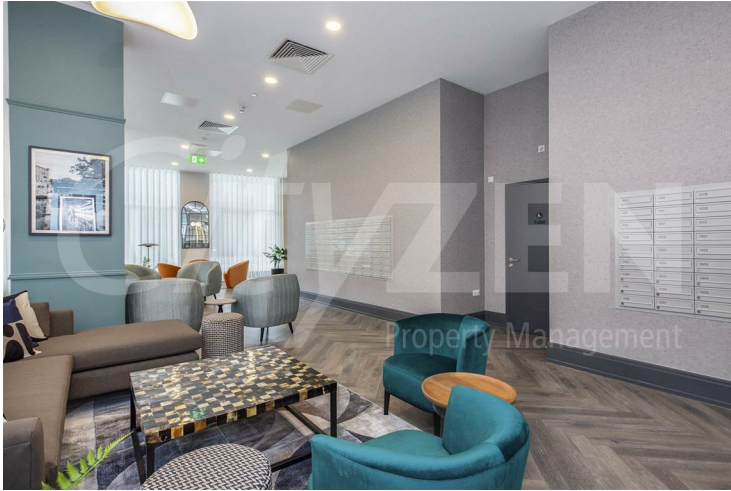


BUILDING ENTRANCE

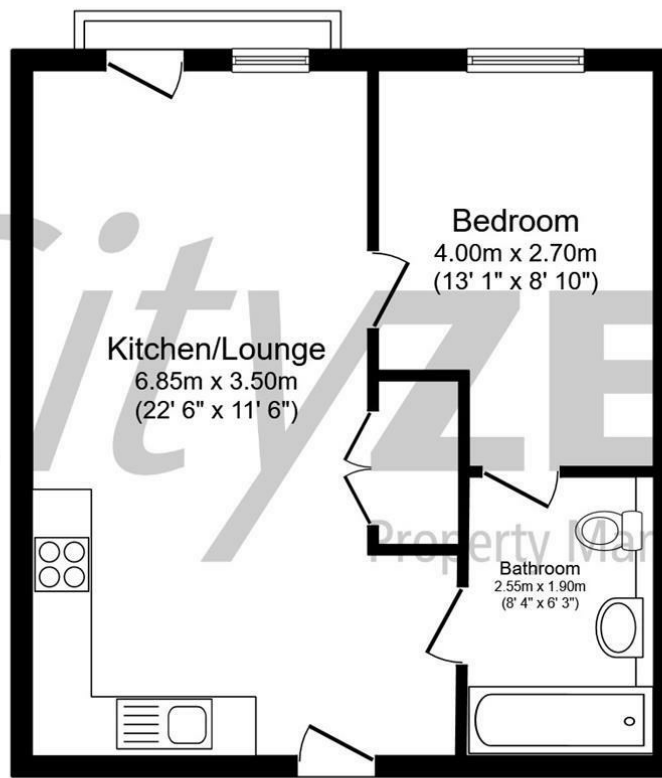


LOBBY/LOUNGE

Silkbank Wharf, 21 Derwent Street, Manchester, M5 4EP

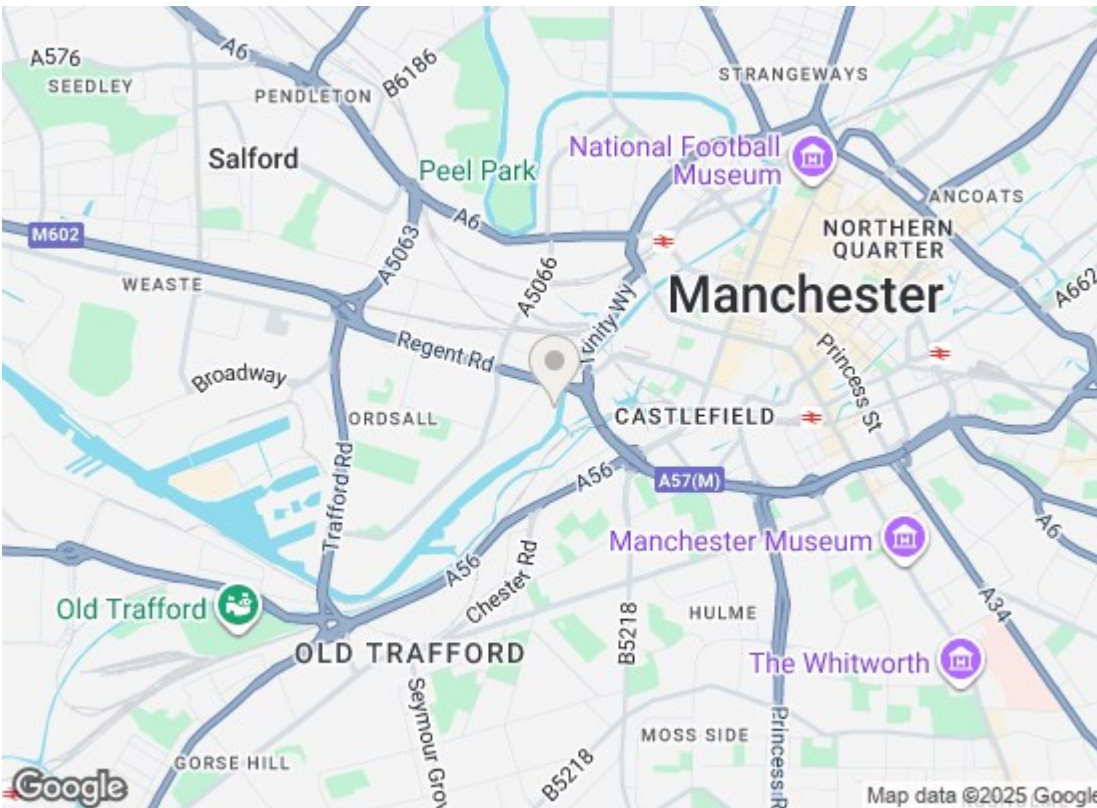


LOBBY/LOUNGE



Total floor area 44.8 m² (482 sq.ft.) approx

This floor plan is for illustrative purposes only. It is not drawn to scale. Any measurements, floor areas (including any total floor area), openings and orientation are approximate. No details are guaranteed, they cannot be relied upon for any purpose and they do not form part of any agreement. No liability is taken for any error, omission or misstatement. A party must rely upon its own inspection(s). Powered by www.focalagent.com



Energy Efficiency Rating		
	Current	Potential
Very energy efficient - lower running costs		
(92 plus) A		
(81-91) B	85	85
(69-80) C		
(55-68) D		
(39-54) E		
(21-38) F		
(1-20) G		
Not energy efficient - higher running costs		
England & Wales EU Directive 2002/91/EC		
Environmental Impact (CO ₂) Rating		
	Current	Potential
Very environmentally friendly - lower CO ₂ emissions		
(92 plus) A		
(81-91) B		
(69-80) C		
(55-68) D		
(39-54) E		
(21-38) F		
(1-20) G		
Not environmentally friendly - higher CO ₂ emissions		
England & Wales EU Directive 2002/91/EC		

We have prepared these property particulars as a general guide to a broad description of the property. They are not intended to constitute part of an offer or contract. We have not carried out a structural survey and the services, appliances and specific fittings have not been tested. All photographs, measurements, floorplans and distances referred to are given as a guide only and should not be relied upon for the purchase of carpets or any other fixtures or fittings. Lease details, service charges and ground rent (where applicable) and council tax are given as a guide only and should be checked and confirmed by your Solicitor prior to exchange of contracts.