



## **Viadux, 42 Great Bridgewater Street, Manchester, M1 5LP**

**£380 Per Week**

THE VIADUX LOCATED ON GREAT BRIDGEWATER STREET M1

1 BEDROOM APARTMENT ON THE 21ST FLOOR

HOTEL STYLE AMENITIES INC: RESIDENTS POOL, GYM, SPA, LOUNGE, BAR, WORKSPACES, CINEMA & EVEN A KARAOKE ROOM!

GREAT VIEWS

FURNISHED  
AVAILABLE FROM 03.08.2026

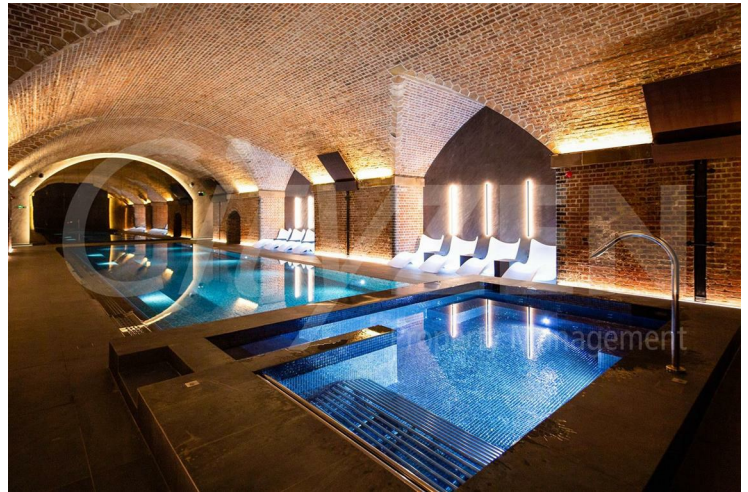
Marketing of On-Site Amenities and Agent Indemnity.

- THE VIADUX
- HOTEL STYLE FACILITIES INC POOL, GYM, CINEMA, CONCIERGE
- 21ST FLOOR
- ONE OF THE MOST LUXURIOUS BUILDINGS IN MANCHESTER
- 1 BEDROOM APARTMENT
- DIRECT ACCESS TO METROLINK
- FURNISHED
- AVAILABLE FROM 03.08.2026
- VIEWS ACROSS CITY CENTRE SKYLINE
- STUDENTS OR PROFESSIONALS WELCOME

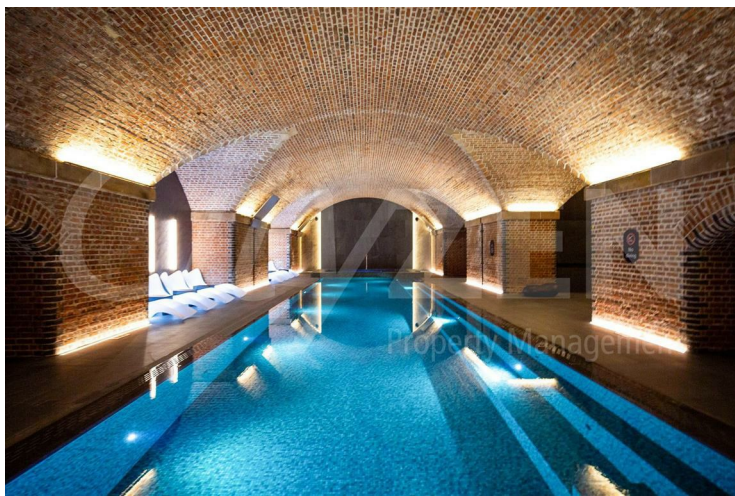
# Viadux, 42 Great Bridgewater Street, Manchester, M1 5LP



THE VIADUX



RESIDENTS POOL



RESIDENTS POOL



RESIDENTS SPA



RESIDENTS POOL



RESIDENTS LOUNGE

**Viadux, 42 Great Bridgewater Street, Manchester, M1 5LP**



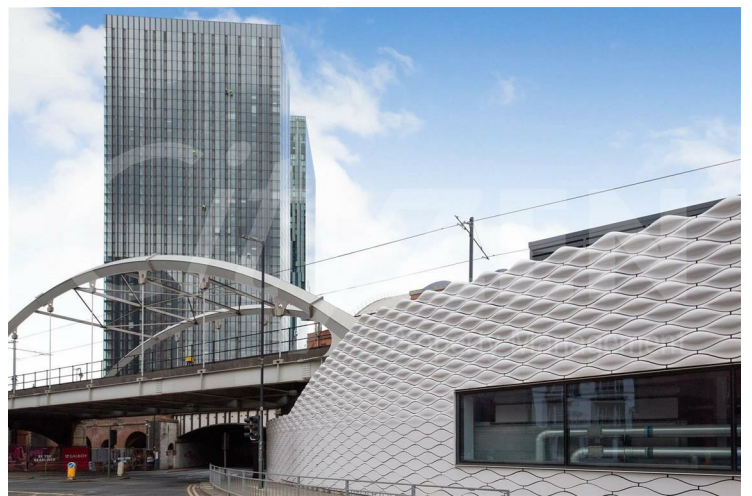
**RESIDENTS GAMES ROOM**



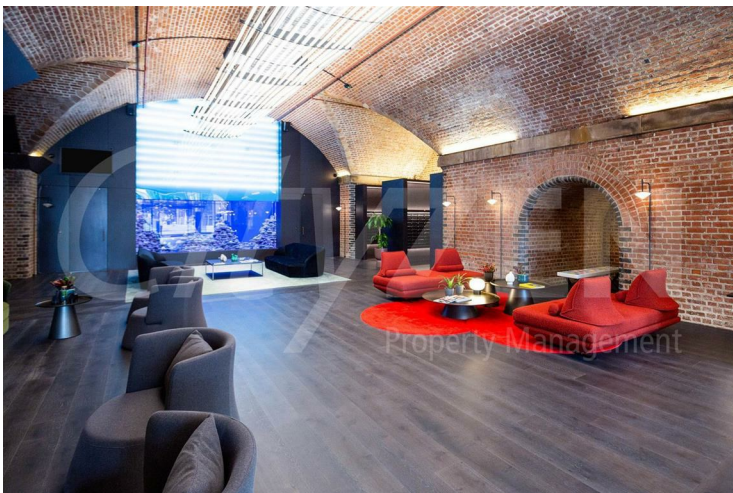
**RESIDENTS BAR/KARAOKE ROOM**



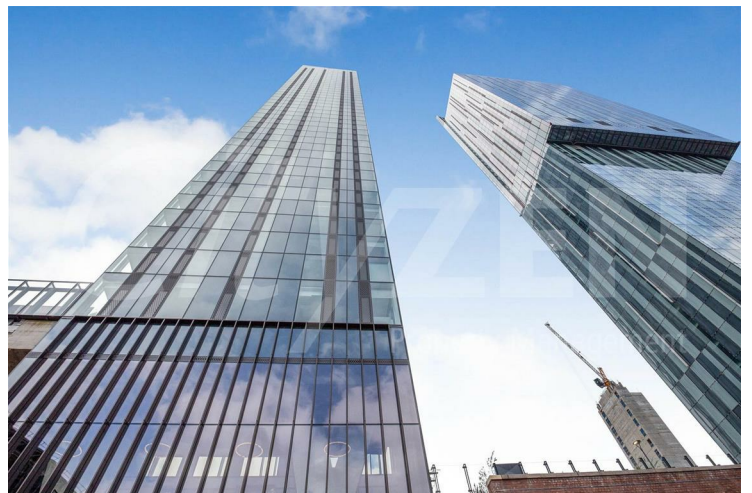
**RESIDENTS SCREENING ROOM**



**THE VIADUX**



**RESIDENTS LOUNGE**



**THE VIADUX**

**Viadux, 42 Great Bridgewater Street, Manchester, M1 5LP**



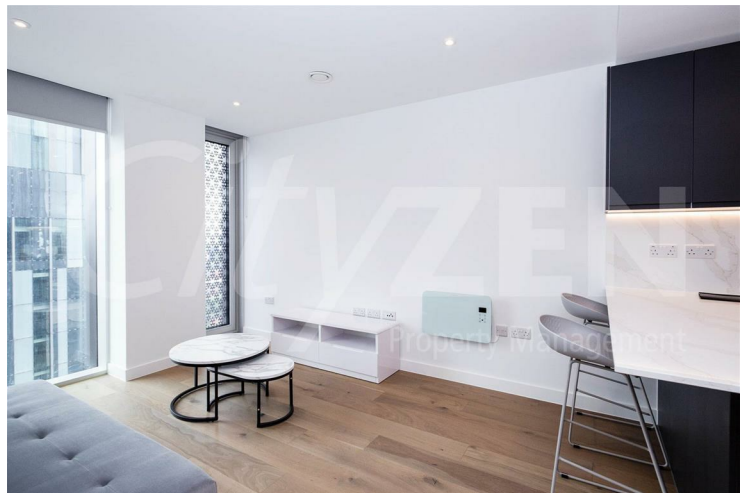
**RECEPTION**



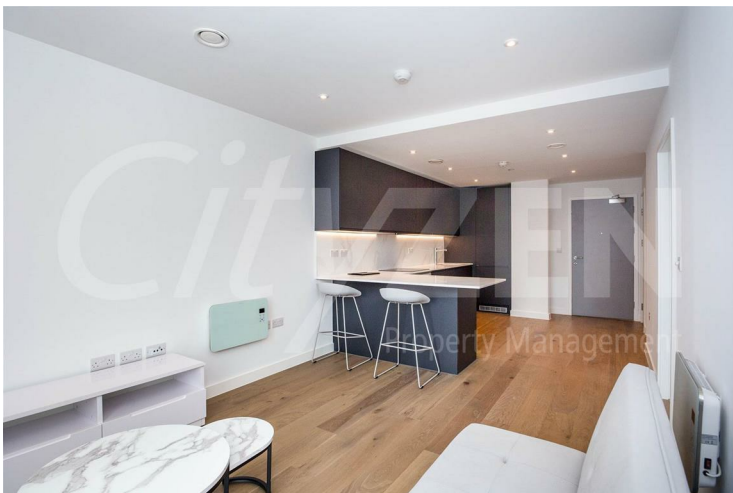
**RECEPTION**



**KITCHEN**



**RECEPTION**



**RECEPTION**



**KITCHEN**

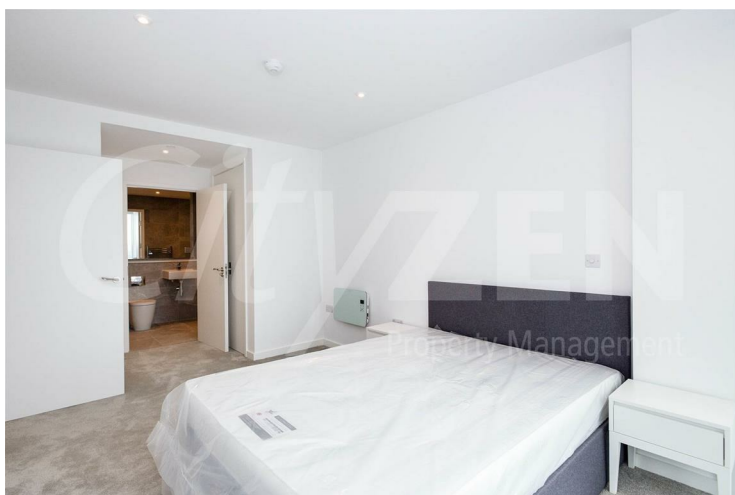
**Viadux, 42 Great Bridgewater Street, Manchester, M1 5LP**



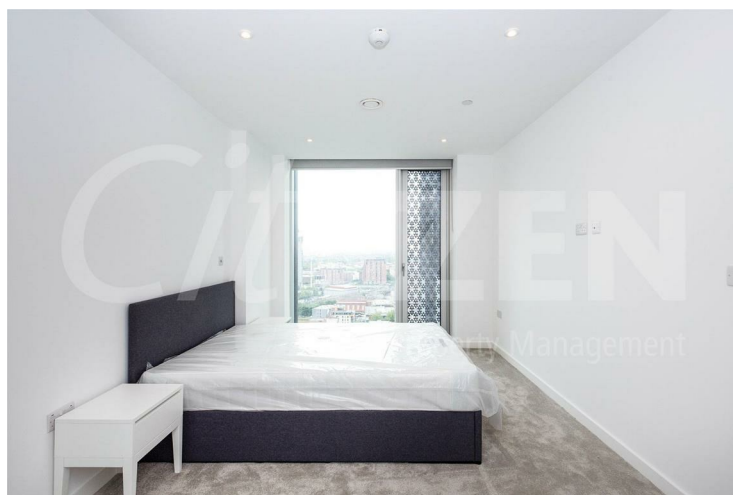
**BEDROOM**



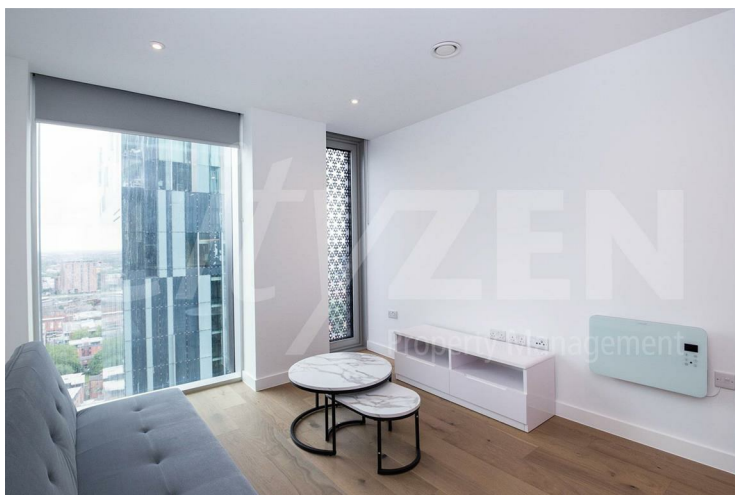
**BEDROOM**



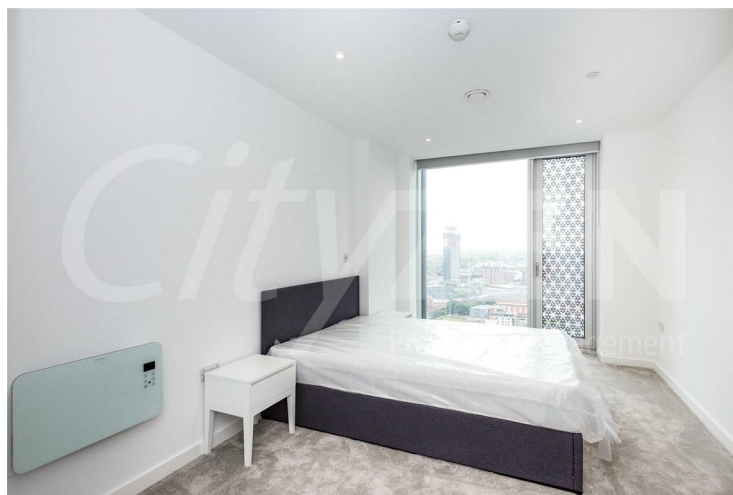
**BEDROOM**



**BEDROOM**



**RECEPTION**



**BEDROOM**

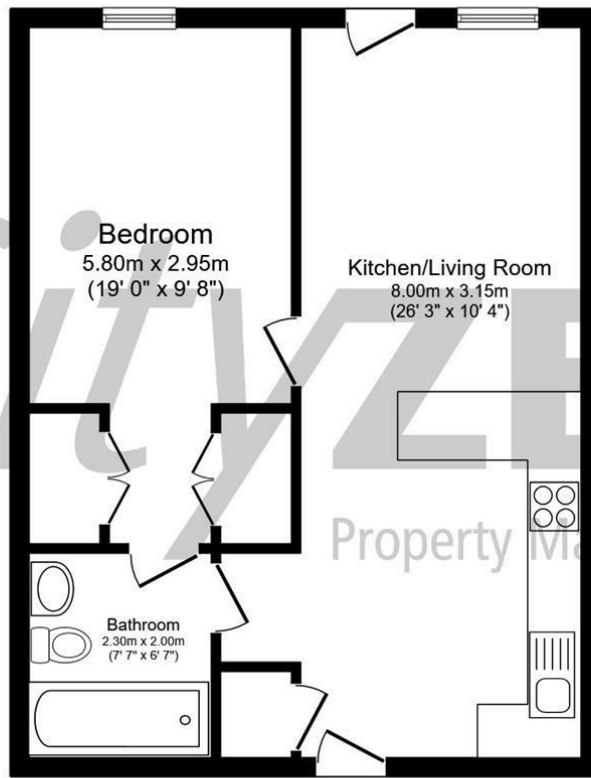
**Viadux, 42 Great Bridgewater Street, Manchester, M1 5LP**



**BATHROOM**

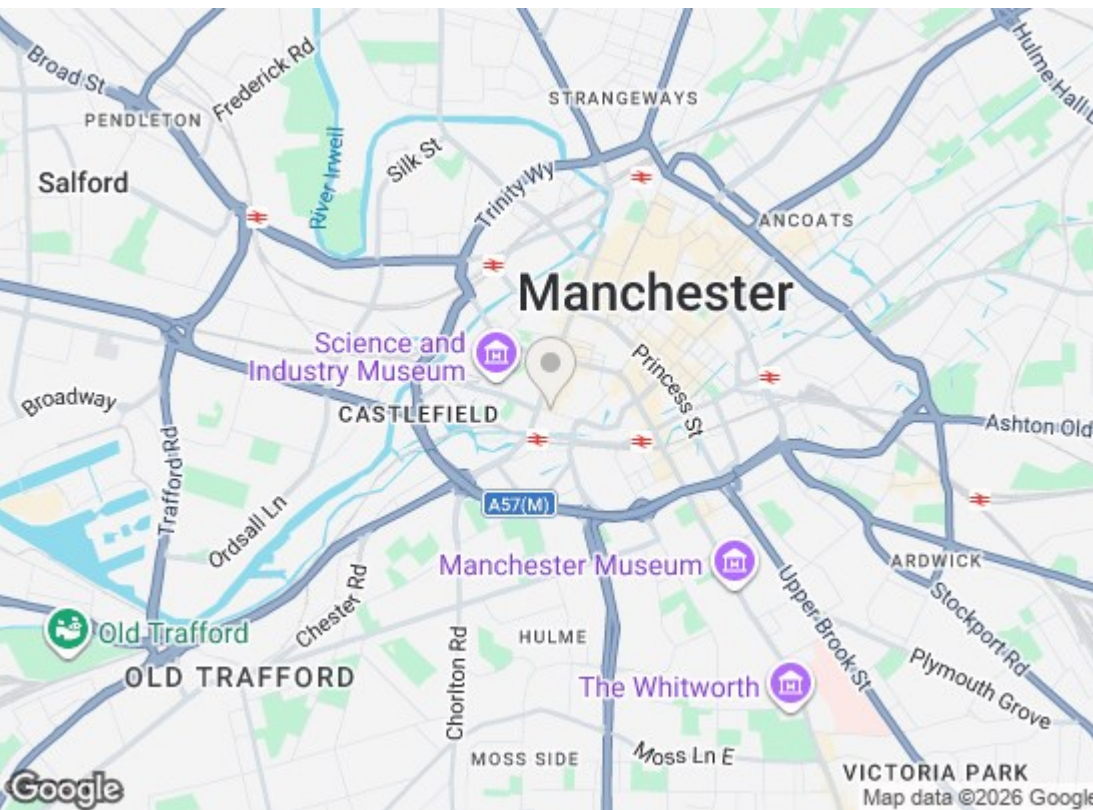


**RESIDENTS POOL**



Total floor area 50.8 m<sup>2</sup> (547 sq.ft.) approx

This floor plan is for illustrative purposes only. It is not drawn to scale. Any measurements, floor areas (including any total floor area), openings and orientation are approximate. No details are guaranteed, they cannot be relied upon for any purpose and they do not form part of any agreement. No liability is taken for any error, omission or misstatement. A party must rely upon its own inspection(s). Powered by www.focalagent.com



Energy Efficiency Rating		
	Current	Potential
Very energy efficient - lower running costs		
(92 plus) <b>A</b>		
(81-91) <b>B</b>	<b>85</b>	<b>85</b>
(69-80) <b>C</b>		
(55-68) <b>D</b>		
(39-54) <b>E</b>		
(21-38) <b>F</b>		
(1-20) <b>G</b>		
Not energy efficient - higher running costs		
EU Directive 2002/91/EC		
Environmental Impact (CO <sub>2</sub> ) Rating		
	Current	Potential
Very environmentally friendly - lower CO <sub>2</sub> emissions		
(92 plus) <b>A</b>		
(81-91) <b>B</b>		
(69-80) <b>C</b>		
(55-68) <b>D</b>		
(39-54) <b>E</b>		
(21-38) <b>F</b>		
(1-20) <b>G</b>		
Not environmentally friendly - higher CO <sub>2</sub> emissions		
EU Directive 2002/91/EC		

We have prepared these property particulars as a general guide to a broad description of the property. They are not intended to constitute part of an offer or contract. We have not carried out a structural survey and the services, appliances and specific fittings have not been tested. All photographs, measurements, floorplans and distances referred to are given as a guide only and should not be relied upon for the purchase of carpets or any other fixtures or fittings. Lease details, service charges and ground rent (where applicable) and council tax are given as a guide only and should be checked and confirmed by your Solicitor prior to exchange of contracts.