



Beaufort Court, 65 Maygrove Road, London, NW6 2EH

£525,000

A 1 bedroom apartment for sale within this sought after development located in West Hampstead NW6.

Situated on the 1st floor, open plan living room with luxury fitted kitchen, access to terrace, bedroom and luxury bathroom suite.

West Hampstead offers excellent shops, bars & restaurants as well as very good transport links to the West End and the City.

Beaufort Court further benefits from a day concierge, residents gym and residents gardens.

- West Hampstead NW6
- Landscaped gardens
- Concierge
- 994 year lease
- 1 Bedroom apartment
- 5 min walk to West End Lane
- 1st floor
- Residents gym
- Excellent transport links to the West End & City
- Balcony

Beaufort Court, 65 Maygrove Road, London, NW6 2EH



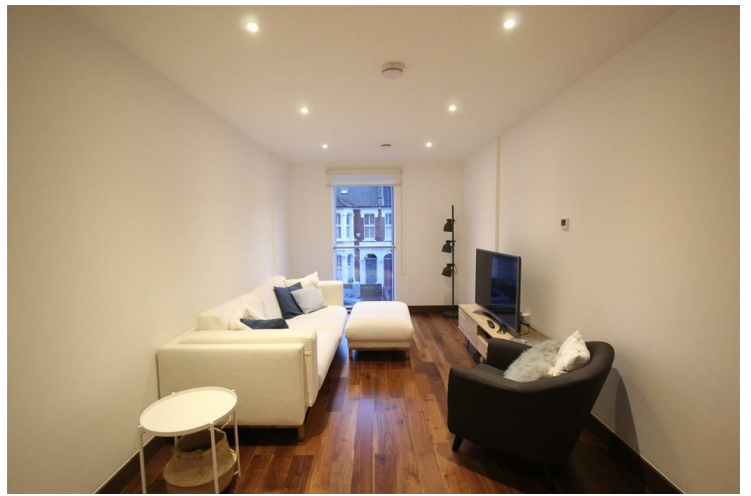
BEAUFORT COURT



TERRACE



BATHROOM



RECEPTION ROOM



KITCHEN



RECEPTION ROOM

Beaufort Court, 65 Maygrove Road, London, NW6 2EH



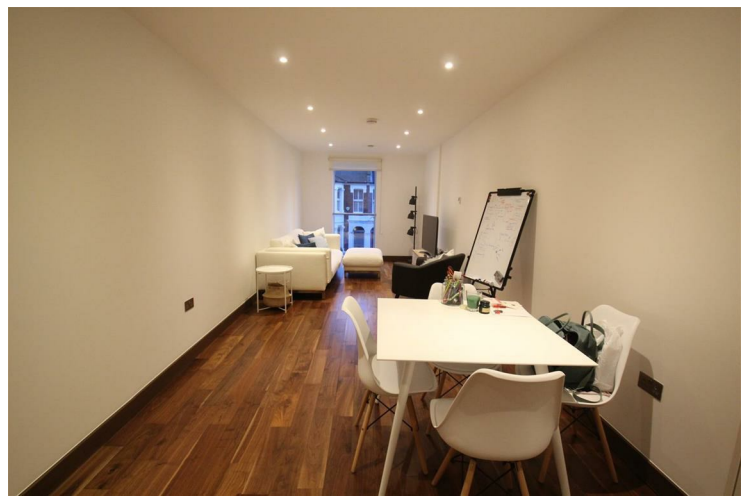
GYM



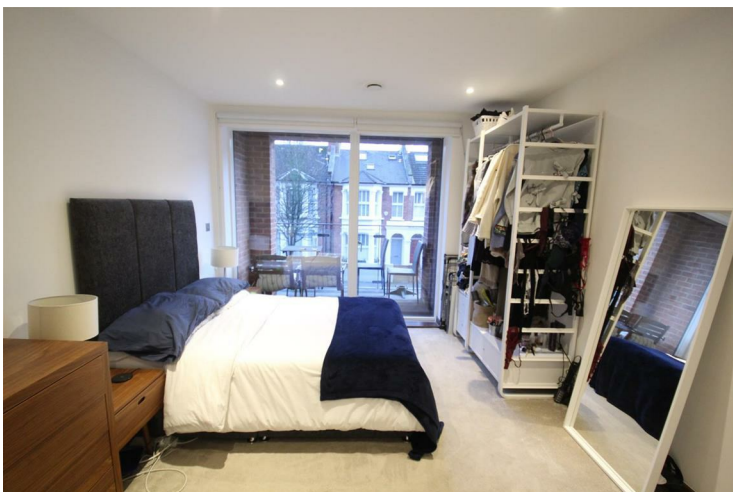
BEDROOM



STATION



RECEPTION ROOM



BEDROOM



Energy Efficiency Rating		
	Current	Potential
Very energy efficient - lower running costs		
(92 plus) A		
(81-91) B	84	84
(69-80) C		
(55-68) D		
(39-54) E		
(21-38) F		
(1-20) G		
Not energy efficient - higher running costs		
England & Wales		EU Directive 2002/91/EC
Environmental Impact (CO ₂) Rating		
	Current	Potential
Very environmentally friendly - lower CO ₂ emissions		
(92 plus) A	93	93
(81-91) B		
(69-80) C		
(55-68) D		
(39-54) E		
(21-38) F		
(1-20) G		
Not environmentally friendly - higher CO ₂ emissions		
England & Wales		EU Directive 2002/91/EC

We have prepared these property particulars as a general guide to a broad description of the property. They are not intended to constitute part of an offer or contract. We have not carried out a structural survey and the services, appliances and specific fittings have not been tested. All photographs, measurements, floorplans and distances referred to are given as a guide only and should not be relied upon for the purchase of carpets or any other fixtures or fittings. Lease details, service charges and ground rent (where applicable) and council tax are given as a guide only and should be checked and confirmed by your Solicitor prior to exchange of contracts.