



Belvedere Row Apartments, Fountain Park Way, London, W12 7JF

£750 Per Week

AVAILABLE NOW A 2 BED 2 BATH SOUTH EAST FACING APARTMENT LOCATED IN "BELVEDERE APARTMENTS" IN WHITE CITY LIVING W12

This lovely apartment is furnished & ready to move into now and is located in the Belvedere Row apartments next to Westfield Shopping Centre while being surrounded by tranquil water gardens.

The 794 square feet of space comprises a dual aspect reception room open plan to a fully fitted kitchen, a spacious corner covered balcony, 2 large double bedrooms with En-suite shower room to the master and a luxury family bathroom suite off the hallway.

White City Living when fully completed will benefit from residents facilities including a swimming pool, gym, sauna, steam room, business lounge, club lounge, café and not one but two cinemas!

Wood Lane (Circle & Hammersmith & City lines) and White City (Central line) stations are a 2 minute walk away. Both stations are in Zone 2.

AVAILABLE NOW
FURNISHED

- WHITE CITY LIVING W12
- AVAILABLE NOW AND FULLY FURNISHED
- UNDERFLOOR HEATING & AIR COOLING
- AMPLE STORAGE
- NEXT TO WESTFIELD SHOPPING CITY
- RESIDENTS GYM, POOL, CINEMA & 24 HR CONCIERGE
- 794 SQ FEET / 74 SQ METERS
- 2 BED 2 BATH CORNER APARTMENT
- BALCONY FACING SOUTH EAST
- DINING AREA AND LUXURY KITCHEN

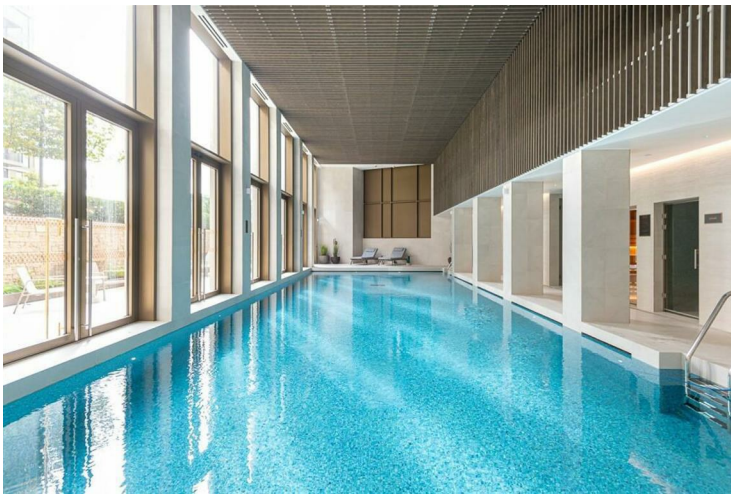
Belvedere Row Apartments, Fountain Park Way, London, W12 7JF



GOLF ROOM



LOBBY



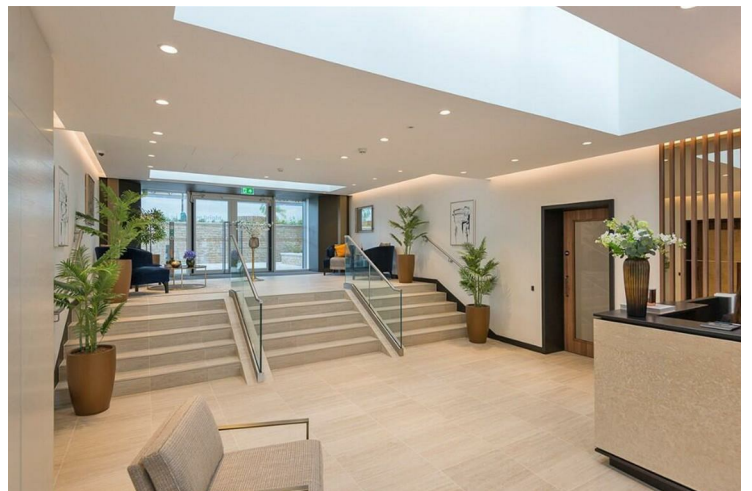
RESIDENTS POOL



LOBBY



RESIDENTS CINEMA



LOBBY

Belvedere Row Apartments, Fountain Park Way, London, W12 7JF



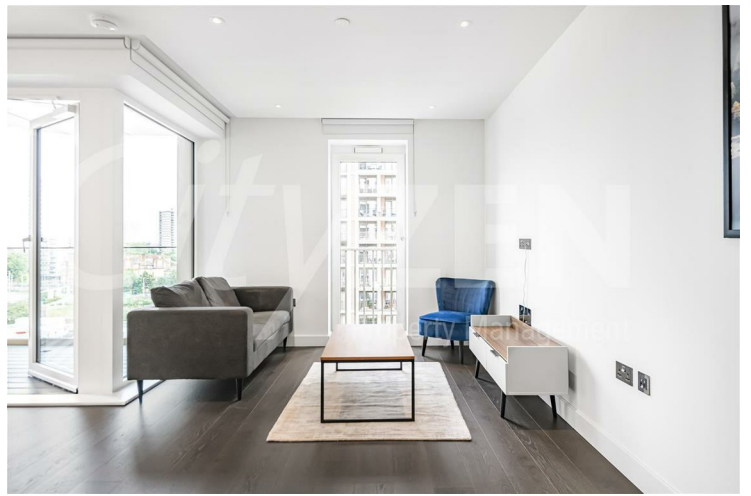
RESIDENTS DINING ROOM



BEDROOM



KITCHEN



RECEPTION



RECEPTION



RECEPTION

Belvedere Row Apartments, Fountain Park Way, London, W12 7JF



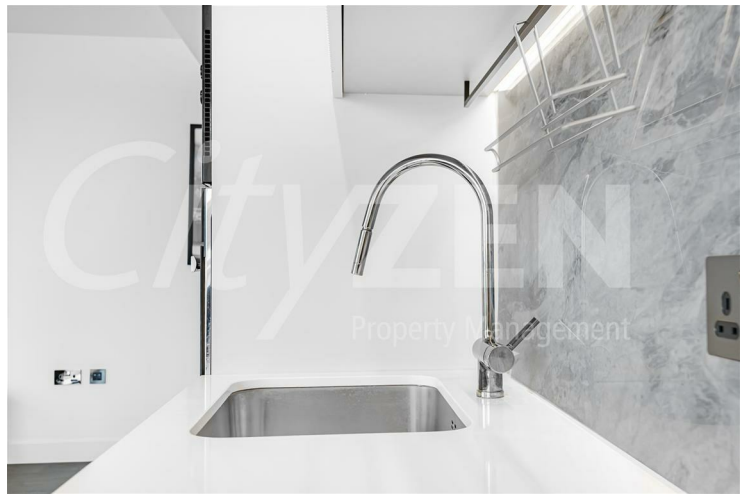
RECEPTION



KITCHEN



RECEPTION



KITCHEN



KITCHEN



BEDROOM

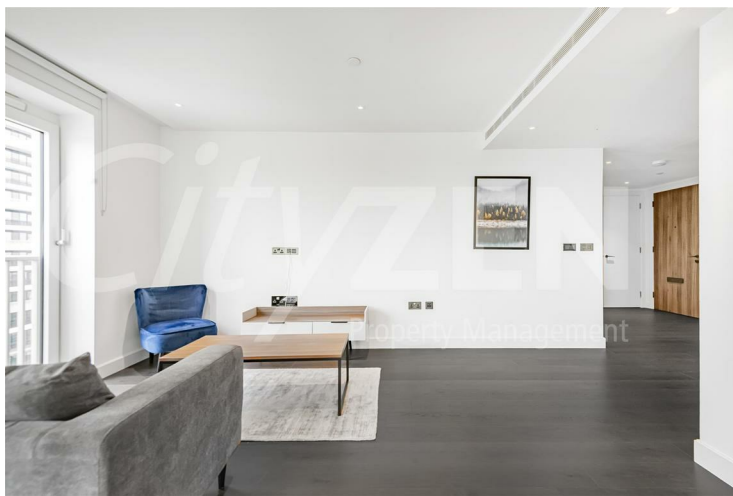
Belvedere Row Apartments, Fountain Park Way, London, W12 7JF



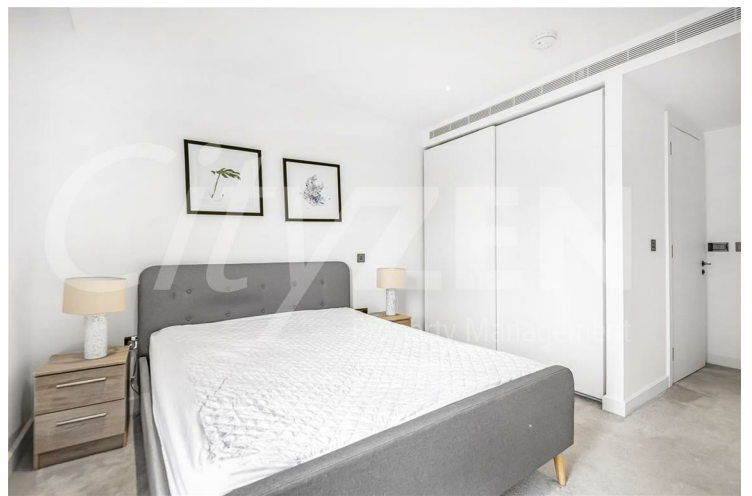
KITCHEN



KITCHEN/DINING AREA



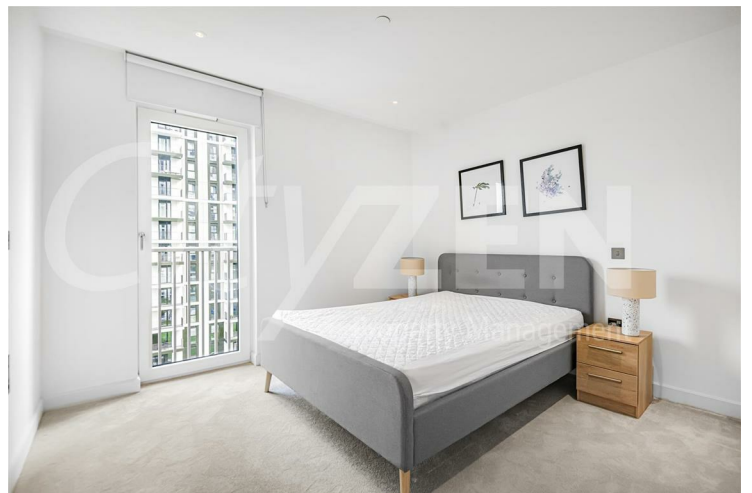
RECEPTION



BEDROOM



RECEPTION



BEDROOM

Belvedere Row Apartments, Fountain Park Way, London, W12 7JF



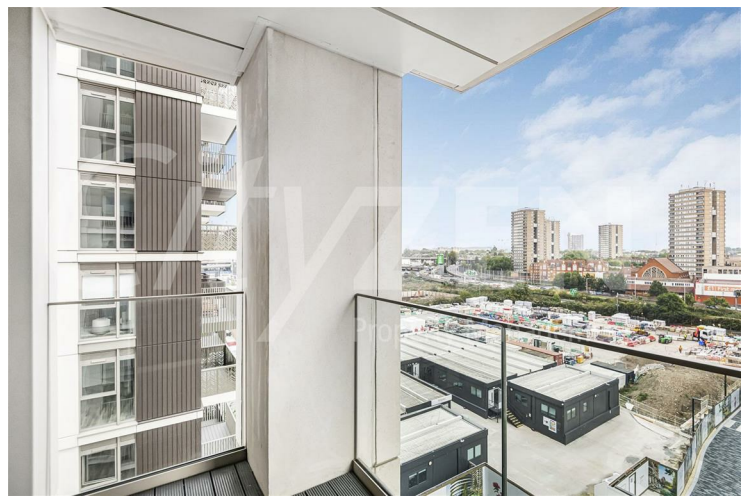
EN-SUITE SHOWER ROOM



BALCONY



BATHROOM



BALCONY



BALCONY



GARDENS

Belvedere Row Apartments, Fountain Park Way, London, W12 7JF



RESIDENTS LOUNGE



RECEPTION

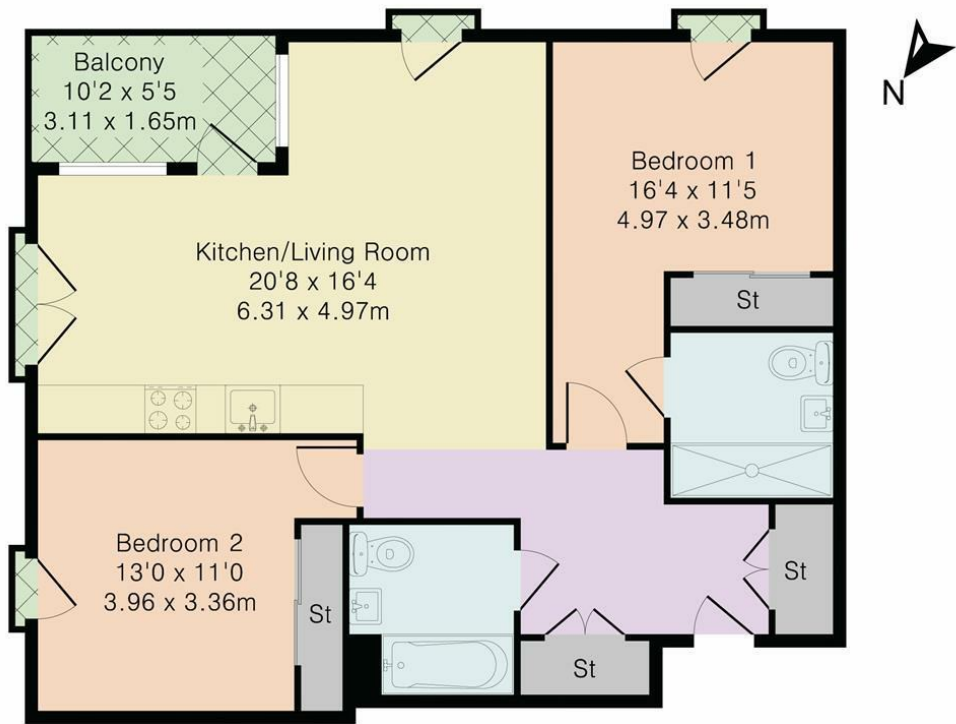


GARDENS

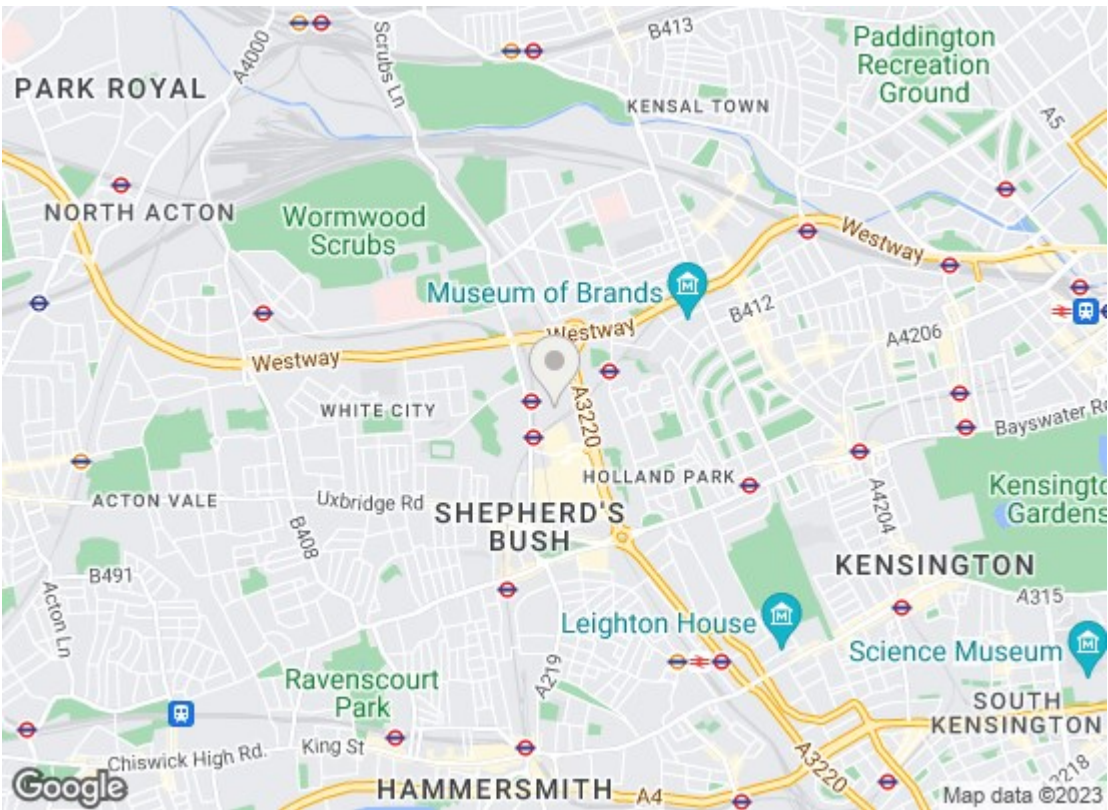


BELVEDERE ROW APARTMENTS

Approximate Gross Internal Area 794 sq ft – 74 sq m



Although Pink Plan Ltd ensures the highest level of accuracy, measurements of doors, windows and rooms are approximate and no responsibility is taken for error, omission or misstatement. These plans are for representation purposes only as defined by RICS code of measuring practise. No guarantee is given on total square footage of the property within this plan. The figure icon is for initial guidance only and should not be relied on as a basis of valuation.



Energy Efficiency Rating		
	Current	Potential
Very energy efficient - lower running costs		
(92 plus) A		
(81-91) B	85	85
(69-80) C		
(55-68) D		
(39-54) E		
(21-38) F		
(1-20) G		
Not energy efficient - higher running costs		
England & Wales EU Directive 2002/91/EC		
Environmental Impact (CO ₂) Rating		
	Current	Potential
Very environmentally friendly - lower CO ₂ emissions		
(92 plus) A		
(81-91) B		
(69-80) C		
(55-68) D		
(39-54) E		
(21-38) F		
(1-20) G		
Not environmentally friendly - higher CO ₂ emissions		
England & Wales EU Directive 2002/91/EC		

We have prepared these property particulars as a general guide to a broad description of the property. They are not intended to constitute part of an offer or contract. We have not carried out a structural survey and the services, appliances and specific fittings have not been tested. All photographs, measurements, floorplans and distances referred to are given as a guide only and should not be relied upon for the purchase of carpets or any other fixtures or fittings. Lease details, service charges and ground rent (where applicable) and council tax are given as a guide only and should be checked and confirmed by your Solicitor prior to exchange of contracts.