



Fisherton Street, London, NW8 8FS

£993 Per Week

A LARGE & MODERN 3 DOUBLE BEDROOM APARTMENT LOCATED IN NW8 WITH A SECURE UNDERGROUND PARKING SPACE INCLUDED

This apartment is located on the first floor and set over 1,000 square feet with a large dual aspect reception room, open plan fully fitted kitchen & access to a large balcony. Two of the 3 bedrooms have a generous amount of storage and the master has an en-suite, a family bathroom is located off the hallway for the other two bedrooms.

The property further benefits from air cooling and underfloor heating as well as a secure underground parking space.

The apartment is within walking distance of both Regents Park and St Johns Wood station as well as an array of shops, restaurants and bars.

AVAILABLE 6TH MAY
FURNISHED

- 3 DOUBLE BEDROOM APARTMENT
- 2 BATHROOMS
- UNDERGROUND PARKING SPACE INCLUDED
- WALK TO REGENTS PARK
- ST JOHN'S' WOOD, WARWICK AVE & MARYLEBONE STATIONS ALL CLOSE
- AIR COOLING & UNDERFLOOR HEATING
- 1,000 SQUARE FOOT OF ACCOMODATION
- CONCIERGE
- AVAILABLE 6TH MAY
- ABOVE AVERAGE AMOUNT OF STORAGE

Fisherton Street, London, NW8 8FS



EN-SUITE



HALLWAY



RECEPTION



BEDROOM



CARRICK YARD



HALLWAY

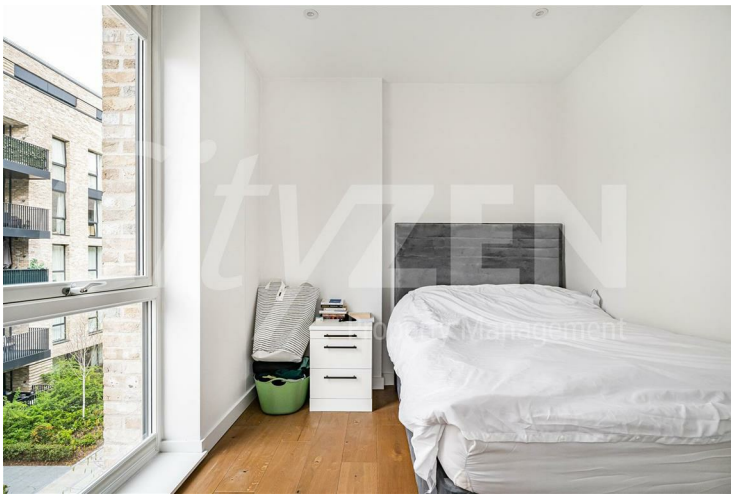
Fisherton Street, London, NW8 8FS



HALLWAY



RECEPTION



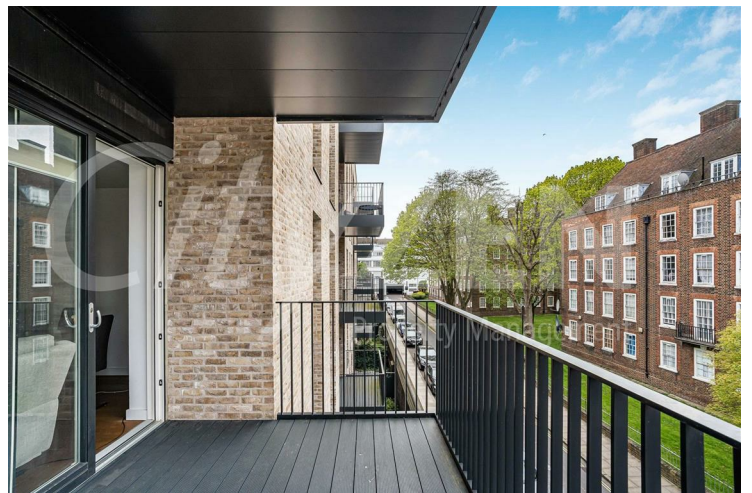
BEDROOM



BALCONY



KITCHEN



BALCONY

Fisherton Street, London, NW8 8FS



CARRICK YARD



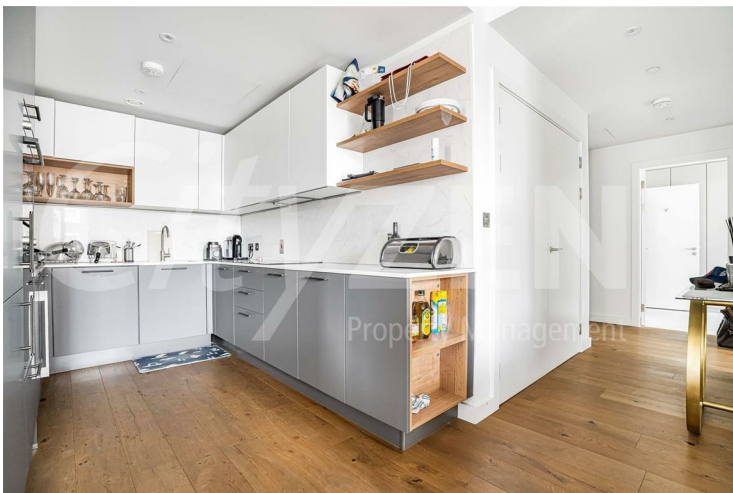
RECEPTION



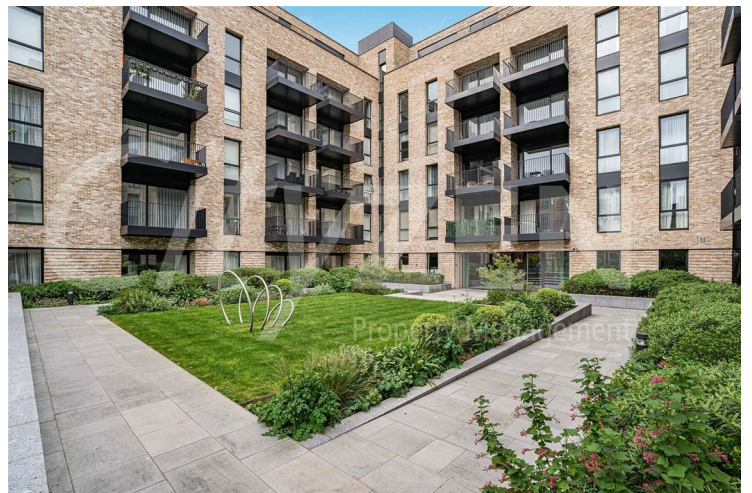
CARRICK YARD



RECEPTION



KITCHEN



CARRICK YARD

Fisherton Street, London, NW8 8FS



CARRICK YARD



RECEPTION



BATHROOM



BALCONY



KITCHEN



LOBBY

Fisherton Street, London, NW8 8FS



CARRICK YARD



BEDROOM



BEDROOM

